



2022 Fact Book

Office of Strategic Planning
and Institutional Research

11/28/2022

Update

East Georgia State College Fact Book 2022

Table of Contents

<u>1</u>	About the College
<u>2</u>	History and Accreditation of East Georgia State College
<u>3</u>	Vision and Mission of East Georgia State College
<u>4</u>	Carnegie Classification of East Georgia State College
<u>5</u>	East Georgia State College Swainsboro Campus Map and Legend
<u>6</u>	East Georgia State College Service Area Map
<u>7</u>	East Georgia State College Economic Impact: Fiscal Years 2011-2020
<u>8</u>	East Georgia State College FY 2021 – FY 2023 Strategic Plan Goals and Strategies
<u>9</u>	ADMINISTRATION
<u>10</u>	University System of Georgia Board of Regents 2022
<u>11</u>	University System of Georgia Administrative Staff 2022
<u>12</u>	East Georgia State College Organization Chart 2022
<u>13</u>	East Georgia State College Organization Chart: Academic Affairs
<u>14</u>	East Georgia State College Organization Chart: Student Affairs
<u>15</u>	East Georgia State College Organization Chart: Augusta
<u>16</u>	East Georgia State College Organization Chart: Statesboro
<u>17</u>	East Georgia State College Organization Chart: Business Affairs
<u>18</u>	East Georgia State College Organization Chart: Information Technology
<u>19</u>	East Georgia State College Organization Chart: Institutional Advancement
<u>20</u>	East Georgia State College Organization Chart: Athletic Department
<u>21</u>	East Georgia State College Organization Chart: Police Department
<u>22</u>	East Georgia State College Cabinet: Spring 2022
<u>23</u>	The East Georgia State College Foundation: 2021-22 Trustees
<u>24</u>	ADMISSIONS
<u>25</u>	Applied, Accepted and Registered Fall Semester 2012-2021
<u>25</u>	Beginning Freshmen: Fall Semester 2012-2021
<u>25</u>	Mean Scholastic Aptitude Test (Old SAT) Scores for Beginning Freshmen: Fall Terms 2012-2021
<u>25</u>	Mean Scholastic Aptitude Test (New SAT) Scores for Beginning Freshmen: Fall Terms 2016-2021
<u>26</u>	Georgia High Schools of Beginning Freshmen: Fall 2021
<u>27</u>	STUDENT FINANCIAL INFORMATION
<u>28</u>	Semester Tuition and Fees Fall 2021 – Spring 2022
<u>29</u>	EGSC SACSCOC and IPEDS Peer Colleges
<u>30</u>	EGSC and IPEDS Peer College Comparisons:
<u>30</u>	• Academic Year Tuition and Fees for Full-Time, First Time Undergraduates
<u>30</u>	• Academic Year Average Net Price of Attendance for Full-Time, First Time Undergraduates
<u>31</u>	• Percent of Full-Time, First-Time Students Awarded Aid FY 2019-20
<u>31</u>	• Average Amount Awarded of Full-Time, First-Time Students Awarded Aid FY 2019-20



East Georgia State College Fact Book 2022

Table of Contents

<u>32</u>	ACADEMIC INFORMATION
<u>33</u>	Associate and Baccalaureate Programs of Study
<u>34</u>	Degrees Conferred Academic Years 2011-12 through 2020-21
<u>35</u>	Degrees Conferred by Academic Program FY 2017-18 through FY 2020-21
<u>36</u>	Three-Year Completion Rates for Fall Semester First-Time Full-Time Associate Degrees: Entering Cohorts 2009-2018
<u>37</u>	Distribution of Grades by Class: Academic Year 2020-21
<u>37</u>	Participation in Education Abroad at the East Georgia State College: Academic Years 2009-10 through 2018-19
<u>37</u>	Library Resources FY 2019-20
<u>37</u>	Library Visitors FY 2016-17 – FY 2020-21
<u>38</u>	Credits Hours Earned to Attempted by Semester and Course Delivery Summer 2011 – Spring 2021
<u>39</u>	ENROLLMENT
<u>40</u>	Enrollment Counts by Class Level: Fall Semester 2012-2021
<u>40</u>	Enrollment Percentages by Class Level: Fall Semester 2012-2021
<u>40</u>	Enrollment Chart by Class Level: Fall Semester 2012-2021
<u>41</u>	Enrollment Counts by Location and Mode of Delivery: Fall Semester 2012-2021
<u>41</u>	Enrollment Percentages by Location/Delivery Mode: Fall Semester 2012-2021
<u>41</u>	Enrollment Chart by Location and Mode of Delivery: Fall Semester 2012-2021
<u>42</u>	Fall Semester 2021 Percentages of Student Load by Class Level
<u>42</u>	Fall Semester 2021 Percentages of Gender and Ethnicity by Class Level
<u>43</u>	Fall Semester 2021 Counts of Gender and Ethnicity by Location/Mode of Delivery
<u>43</u>	Fall Semester 2021 Percentage of Gender and Ethnicity by Location/Mode of Delivery
<u>44</u>	Enrolled Georgia Residents by County of Residence: Fall 2021
<u>45</u>	Fall Semester 2021 Percentages of Student Load by Class Level
<u>45</u>	Fall Semester 2021 Number of Veteran/Military Students
<u>45</u>	Retention Rates for Fall Semester First-Time Full-Time Undergraduates: Entering Cohorts 2011-2020
<u>46</u>	STUDENT RELATED INFORMATION
<u>47</u>	East Georgia State College Crime Statistics by Location
<u>50</u>	East Georgia State College Graduate Alumni by State of Residence through Fall 2021
<u>51</u>	East Georgia State College Graduate Alumni by Georgia County of Residence through Fall 2021
<u>52</u>	FACULTY AND STAFF
<u>53</u>	Full-Time Faculty by Teaching Assignment Location Spring Semester 2022
<u>54</u>	Full-Time Professorial Faculty by Rank and Ethnicity: Fall 2020
<u>54</u>	Average Academic Year Salaries of Instructional Faculty, EGSC and Selected Peers: Academic Year 2018-19
<u>54</u>	Average Academic Year Salaries Chart of Instructional Faculty, EGSC & Selected Peers: Academic Year 2018-19
<u>55</u>	College Full-Time Employees by Occupational Classification, Gender and Ethnicity: November 1, 2021
<u>56</u>	FINANCIAL INFORMATION
<u>57</u>	Revenue by Source: Fiscal Years 2015-16 through 2019-20
<u>58</u>	Expenditures by Function: Fiscal Years 2015-16 through 2019-20
<u>59</u>	EGSC Foundation Fundraising: 1999-2021
<u>60</u>	PHYSICAL FACILITIES
<u>61</u>	College Buildings by Major Use, Swainsboro Campus: Spring 2022
<u>61</u>	Number of Rooms by Basic Room Type, Swainsboro Campus: Spring 2022
<u>61</u>	Space Assignment by Room Use and Building Location: Spring 2022
<u>61</u>	East Georgia State College Land Holdings: As of December 2021



ABOUT THE COLLEGE

History of East Georgia State College

As early as 1956, community leaders in Emanuel County and Swainsboro urged the state to establish a two-year college in the area. Committees were formed in 1956 and in 1965, and lobbying efforts at the state level were undertaken, but without immediate results. In December 1969, the Board of Regents of the University System of Georgia authorized a study to determine the need for additional two-year colleges in the state. A year later, six possible sites, including the Swainsboro–Emanuel County area, were approved with the stipulation that the county of each prospective site provide the land or property for a campus site, as well as the funds for constructing and furnishing the initial physical plant.

In September 1971, the citizens of Emanuel County voted for a bond issue of \$2.1 million to underwrite the cost of a new college. The Emanuel County Board of Education, representing the citizens of the county and working with the local college committee, also provided a wooded site of 207 acres (190 acres of which were donated by Luck Flanders Gambrell) within the city limits of Swainsboro. In December 1971, the Board of Regents gave final approval for the campus site and named the new college Emanuel County Junior College. In 1987 the University System of Georgia mandated that the term "junior" be deleted from the names of its two-year institutions, and in 1988 Emanuel County Junior College became East Georgia College. The \$2.1 million bond issue also was paid off in 1988.

In 2012, after being granted state college status, the College's name was again changed to East Georgia State College (EGSC) to reflect a new mission of providing a limited number of baccalaureate degrees targeted to meet the needs of the College's service area. In addition to a Bachelor of Science in Biology, beginning in Fall Semester 2012, the ECSC launched an online Bachelor of Art in Fire and Emergency Services Administration in Spring Semester 2016 and an online Bachelor of Science RN to BSN Bridge Nursing Completion Program. Both of these online degree programs are designed to meet the needs of working professionals who seek to advance their careers.

Through the years, East Georgia State College has proudly maintained its original strategic purpose as an access institution with strong community ties and continues, today, to adhere to its original mission by providing accessibility to a wide range of credit and non-credit academic programs in an atmosphere contributing to the intellectual and cultural growth of our students.

Many in East Georgia State College's diverse student population are first generation and non-traditional college students who have been raised in economically depressed conditions within rural east-central Georgia. By tailoring our academic programs to meet the challenging developmental needs through learning support while also maintaining affordable tuition, East Georgia State College has been successful in increasing the educational levels of the communities it serves.

Accreditation of East Georgia State College

East Georgia State College is accredited by the Southern Association of Colleges and Schools Commission on Colleges to award certificates, associate degrees and baccalaureate degrees. Questions about the accreditation of East Georgia State College may be directed in writing to the Southern Association of Colleges and Schools Commission on Colleges at 1866 Southern Lane, Decatur, GA 30033-4097, by calling (404) 679-4500, or by using information available on SACSCOC's website (www.sacscoc.org).

Vision and Mission of East Georgia State College

Presented below are East Georgia State College's (EGSC's) vision and mission statements. EGSC's vision statement provides the long-term context for pursuing a mission that focuses on extending the College's associate of arts degree options to multiple student populations and developing baccalaureate degrees targeted to the needs of its service area.

Vision Statement

Through bold and transformative action, East Georgia State College aspires to significantly increase the educational achievement of its students and to be an indispensable pathway to a more fulfilling and prosperous future.

Mission Statement

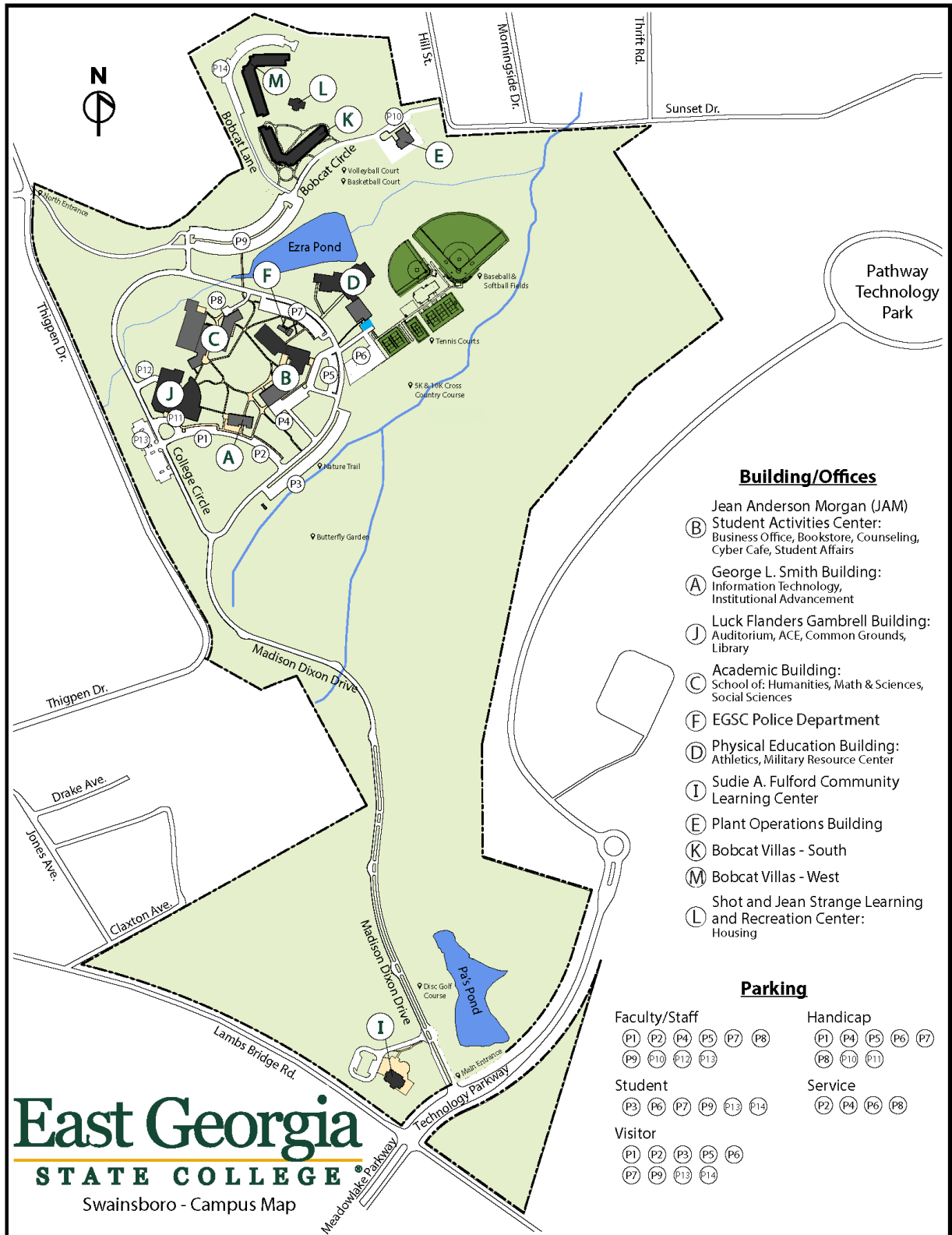
East Georgia State College is an associate degree granting, liberal arts institution of the University System of Georgia providing its students access to both academically transferable programs of study and collaborative programs in occupation related fields. The College also offers targeted baccalaureate level degrees that support the University System's initiative to expand educational opportunities. The College prepares traditional and nontraditional students for success in the global 21st century through a technologically advanced teaching and learning environment that fosters personal growth by utilizing an expanding range of resources and amenities, including an on-campus student residential option. The College also continuously engages the communities it serves through public service and cultural enrichment.

EGSC Carnegie Classification (Source: <http://carnegieclassifications.iu.edu/>)

Classification	Category (Classification Definitions)
Basic	<u>Baccalaureate/Associate's Colleges</u> : Includes four-year colleges (by virtue of having at least one baccalaureate degree program) that conferred more than 50 percent of degrees at the associate's level. Excludes Special Focus Institutions, Tribal Colleges, and institutions that have sufficient master's or doctoral degrees to fall into those categories. The formal expression of these classifications is (Classification):(Subset). Baccalaureate/Associate's Colleges: Associate's Dominant.
Undergraduate Instructional Program	<u>Baccalaureate/Associate's Colleges</u> : These institutions awarded both associate's and bachelor's degrees, but the majority of degrees awarded were at the associate's level.
Graduate Instructional Program	(Not Classified)
Enrollment Profile	<u>Exclusively undergraduate four-year</u> : Fall enrollment data show only undergraduates enrolled at these bachelor's or higher degree granting institutions.
Undergraduate Profile	<u>Full-time, inclusive, lower transfer-in</u> : Fall enrollment data indicate at least 80 percent of undergraduates are enrolled full-time at these bachelor's or higher degree granting institutions. These institutions either did not report test score data or the scores indicate that they extend educational opportunity to a wide range of students with respect to academic preparation and achievement. Fewer than 20 percent of entering undergraduates are transfer students.
Size and Setting	<u>Four-year, small, primarily nonresidential</u> : Fall enrollment data indicate FTE* enrollment of 1,000–2,999 degree-seeking students at these bachelor's or higher degree granting institutions. Fewer than 25 % of degree-seeking undergraduates live on campus** and/or fewer than 50 % attend full time (includes exclusively distance education institutions).

*FTE: Full-time equivalent enrollment was calculated as full-time plus one-third part-time.
 **On campus is defined as institutionally owned, controlled, or affiliated housing.

East Georgia State College Swainsboro Campus Map and Legend



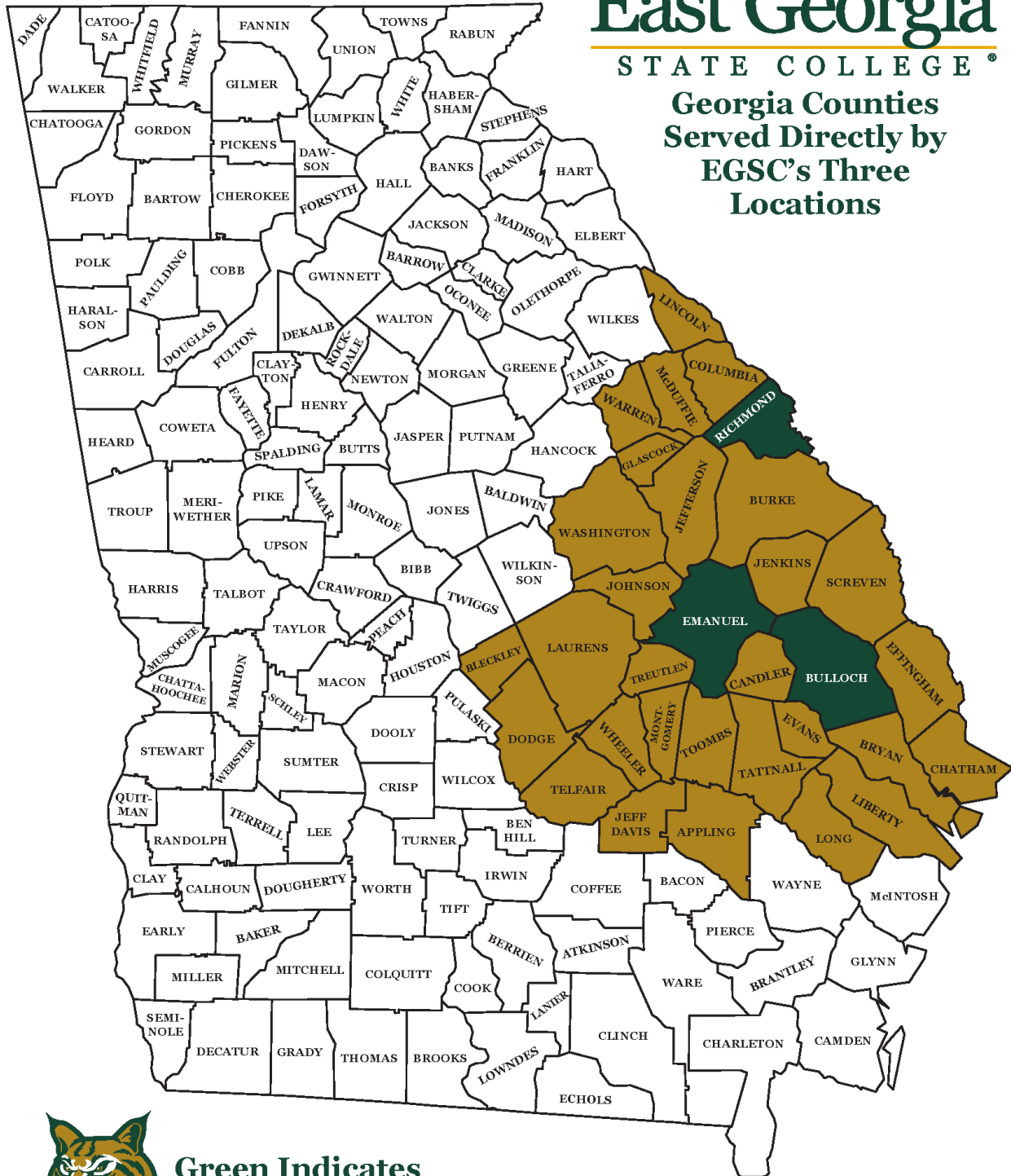
East Georgia
STATE COLLEGE
 Swainsboro - Campus Map

East Georgia State College Service Area Map

East Georgia

STATE COLLEGE®

Georgia Counties Served Directly by EGSC's Three Locations



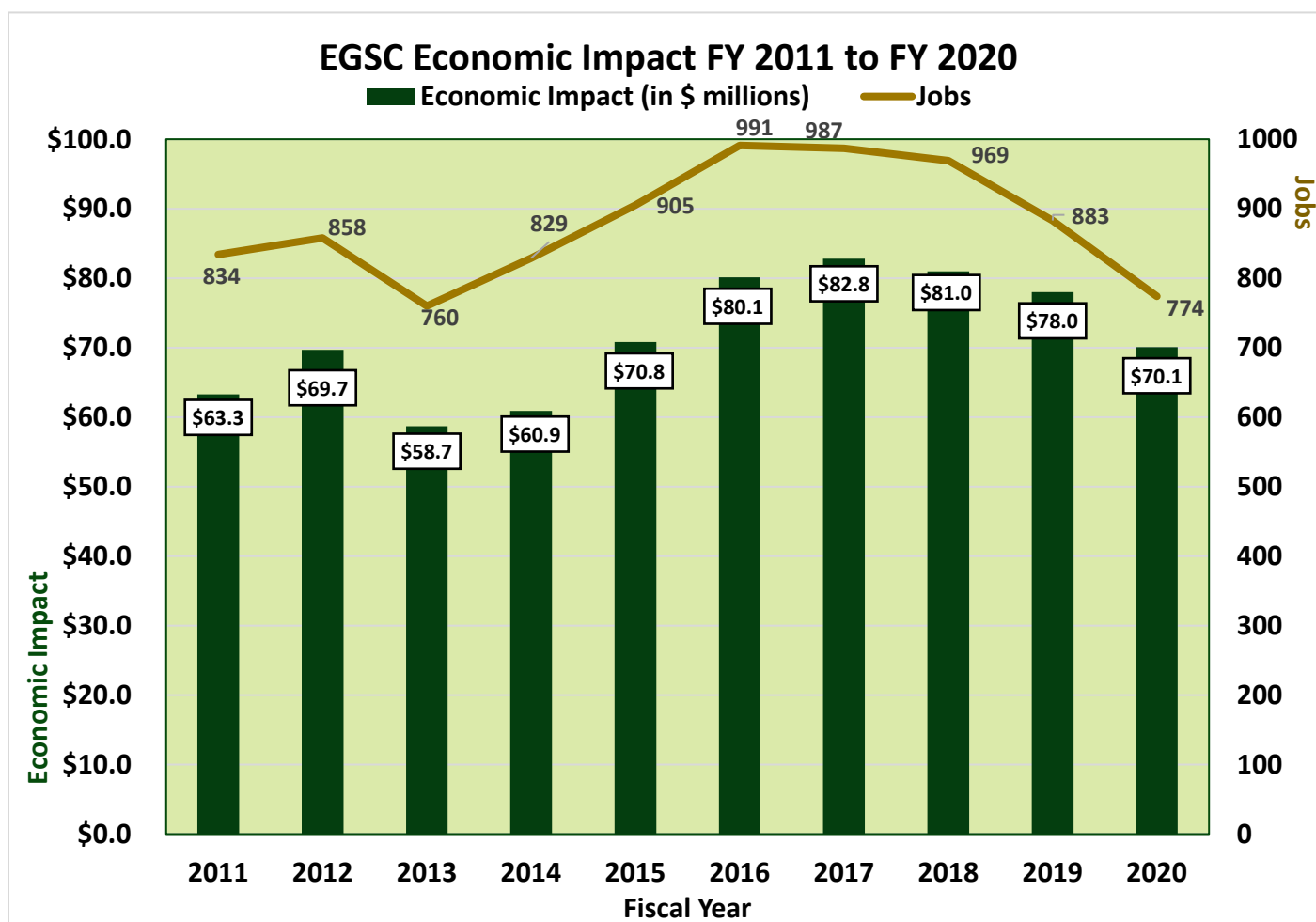
as of 03/07/22

East Georgia State College Economic Impact: Fiscal Years 2011-2020

Source: Selig Center for Economic Growth
Terry College of Business
The University of Georgia

Year	Output Impact	Jobs
FY 2020	\$70,056,633	774
FY 2019	\$77,977,155	883
FY 2018	\$80,952,494	969
FY 2017	\$82,831,552	987
FY 2016	\$80,140,200	991
FY 2015	\$70,849,180	905
FY 2014	\$60,856,225	829
FY 2013	\$58,679,138	760
FY 2012	\$69,690,604	858
FY 2011	\$63,282,323	834

Service area as defined by Selig Center: Emanuel, Candler, Bulloch, Johnson, Jefferson, Toombs, Treutlen, and Jenkins



The East Georgia State College FY 2021 – FY 2023 Strategic Plan Goals and Strategies

As a unit of the University System of Georgia (USG), EGSC bases its institutional goals on the USG vision statement and system goals. Presented below is the vision statement of the *USG Strategic Plan 2024*.

USG Vision Statement

The University System of Georgia will excel in meeting the needs of our state and economy through universities and colleges that: provide an affordable, accessible and high quality education; promote lifelong success of students; and create, disseminate and apply knowledge for the advancement of our state, nation and world.

Consistent with its role as an access institution within the USG, EGSC's four institutional goals are presented below.

1. **Student Success:** East Georgia State College provides access to innovative academic programs and engages in college completion initiatives, transforming students and equipping them with tools for success.
2. **Responsible Stewardship:** East Georgia State College uses innovative cost control measures to deliver high quality, affordable degree programs.
3. **Community Impact:** East Georgia State College provides a rich array of public service programs through its Sudie A. Fulford Community Center and Morgan House to the communities it serves.
4. **Economic Competitiveness:** East Georgia State College is a catalyst for economic development through a variety of initiatives and degree programs that nurture effective student leaders equipped to transform communities in innovative ways.

USG Goal/EGSC Institutional Goal Alignment and Strategies

Source: EGSC Office of Strategic Planning and Institutional Research

USG/EGSC Goals	Strategy No.	Strategy Description
Goal 1	Strategy 1	Strengthen Momentum Year Initiatives
	Strategy 2	Strengthen Dual Enrollment
	Strategy 3	Develop Strategic Recruiting Plan
	Strategy 4	Improve Access and Completion for Traditionally Underserved Students
	Strategy 5	Shorten Time of Credits to Degree
	Strategy 6	Restructure Instructional Delivery
Goal 2	Strategy 7	Strengthen Collaboration with Partner Institutions
	Strategy 8	Enhance Access and Utilization of Online Services
	Strategy 9	Provide and Maintain Safe State of the Art Facilities
	Strategy 10	Efficiently Provide Excellent Customer Relations
	Strategy 11	Manage Student Debt Effectively
Goal 3	Strategy 12	Strengthen Community Outreach
Goal 4	Strategy 13	Transform students into responsible citizens through the development of employment success skills, student leadership and community service
	Strategy 14	Position EGSC as a unique institution offering both liberal arts and career ready education through innovative degrees and programs aligned with the employment needs of the region

ADMINISTRATION

University System of Georgia Board of Regents

Regent	Residence	Congressional District	Term of Office
Harold Reynolds (BOR Chair)	Greensboro	Tenth	2020-2027
Erin Hames (BOR Vice Chair)	Atlanta	State-at-Large	2018-2023
Samuel D. Holmes	Atlanta	State-at-Large	2019-2026
James M. Hull	Augusta	State-at-Large	2016-2023
T. Dallas Smith	Atlanta	State-at-Large	2020-2027
Neil L. Pruitt, Jr	Norcross	State-at-Large	2022-2027
Patrick C. Jones	Waycross	First	2022-2025
Bàrbara Rivera Holmes	Albany	Second	2018-2025
C. Thomas Hopkins, Jr.	Griffin	Third	2018-2024
Cade Joiner	Loganville	Fourth	2022-2026
Sarah-Elizabeth Langford Reed	Atlanta	Fifth	2017-2024
Richard “Tim” Evans	Columbus	Sixth	2022-2029
Jose R Perez	Peachtree Corners	Seventh	2019-2026
W. Allen Gudenrath	Macon	Eighth	2018-2025
Jim Syfan	Gainesville	Ninth	2022-2029
Tom Bradbury	Vinnings	Eleventh	2022-2024
Everett Kennedy III	Statesboro	Twelfth	2020-2027
Doug Aldridge	Atlanta	Thirteenth	2022-2028
Lowery Houston May	Rome	Fourteenth	2020-2027

Source: University System of Georgia Board of Regents

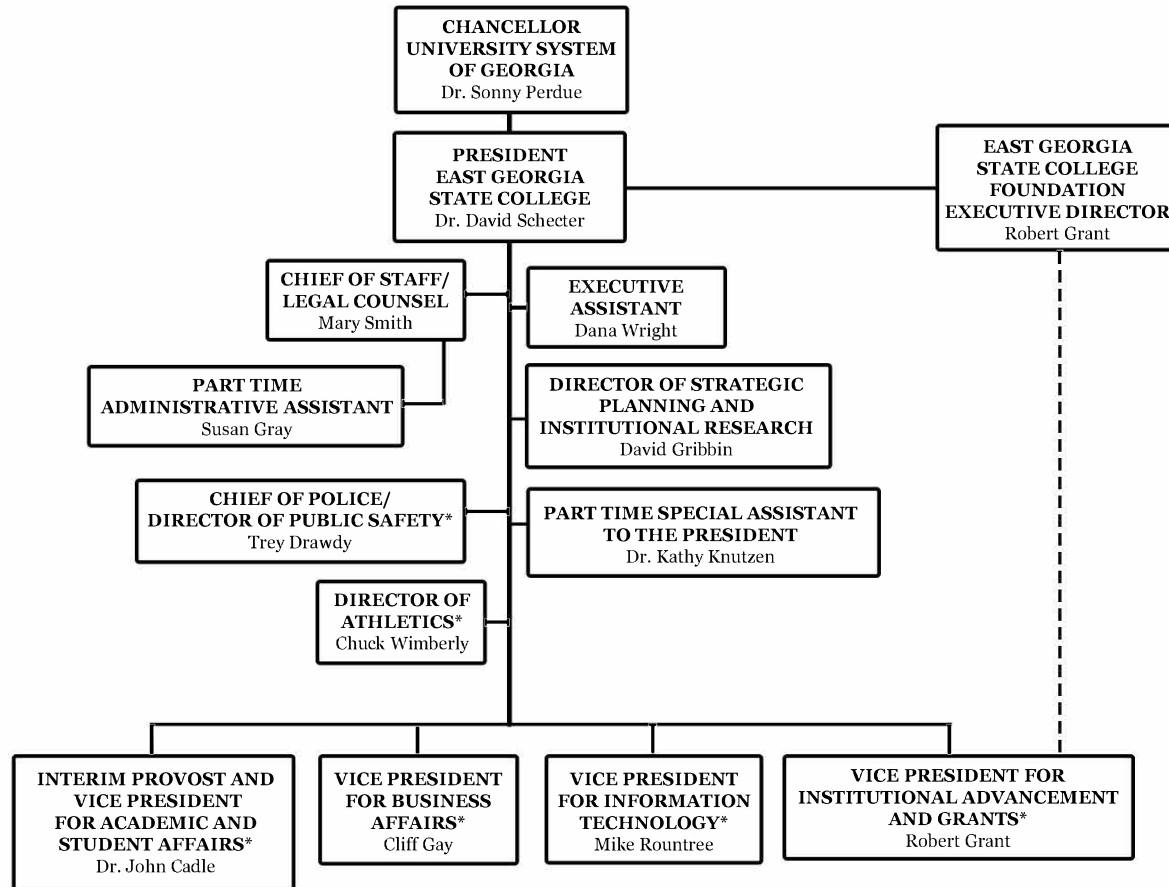
University System of Georgia Administrative Staff 2022

Position	Staff Member
Chancellor	Sonny Perdue
Executive Vice Chancellor Administration	Teresa McCartney
Vice Chancellor II & Chief of Staff	Ashley Jones May
Executive Vice Chancellor for Academic Affairs & Chief Academic Officer	Ashwani Monga
Executive Vice Chancellor for Strategy & Fiscal Affairs	Tracey Cook
Vice Chancellor for Academic Affairs	Dana Nichols
Vice Chancellor – Development	Kirby Thompson
Vice Chancellor – Enrollment Management & Student Affairs	Scot Lingrell
Vice Chancellor – Fiscal Affairs	Jeff Davis
Vice Chancellor – Human Resources	Juanita Hicks
Vice Chancellor – Information Technology Services & Chief Information Officer	Jonathan Piersol
Vice Chancellor – Internal Audit and Chief Audit Officer	Jenna Wiese
Vice Chancellor – Leadership & Institutional Development	Stuart Rayfield
Vice Chancellor – Legal Affairs	Christopher McGraw
Vice Chancellor – Organizational Effectiveness	John M. Fuchko, III
Vice Chancellor – Real Estate & Facilities	Sandra L. Neuse
Vice Chancellor – Research & Policy Analysis	Angela Bell
Associate Vice Chancellor – Faculty Development	Jeffery Galle
Associate Vice Chancellor – Strategic Academic Initiatives	Felita Williams
Associate Vice Chancellor – Distance Learning & Innovation	Jon Sizemore
Assistant Vice Chancellor – Academic Library Services & Executive Director for GALILEO	Lucy Harrison
Chief Information Security Officer	Alfred Barker
Chief of Police & Director of Safety & Security	Mike Coverson
Executive Budget Director	Jason Matt
Director of Economic Development	Chris Green
Executive Director of Georgia Film Academy	Jeffrey Stepakoff
State Librarian, Georgia Public Library Service	Julie Walker
Director of Georgia Archives	Christopher Davidson

Source: University System of Georgia Board of Regents

East Georgia State College Organization Charts

East Georgia State College Organizational Chart



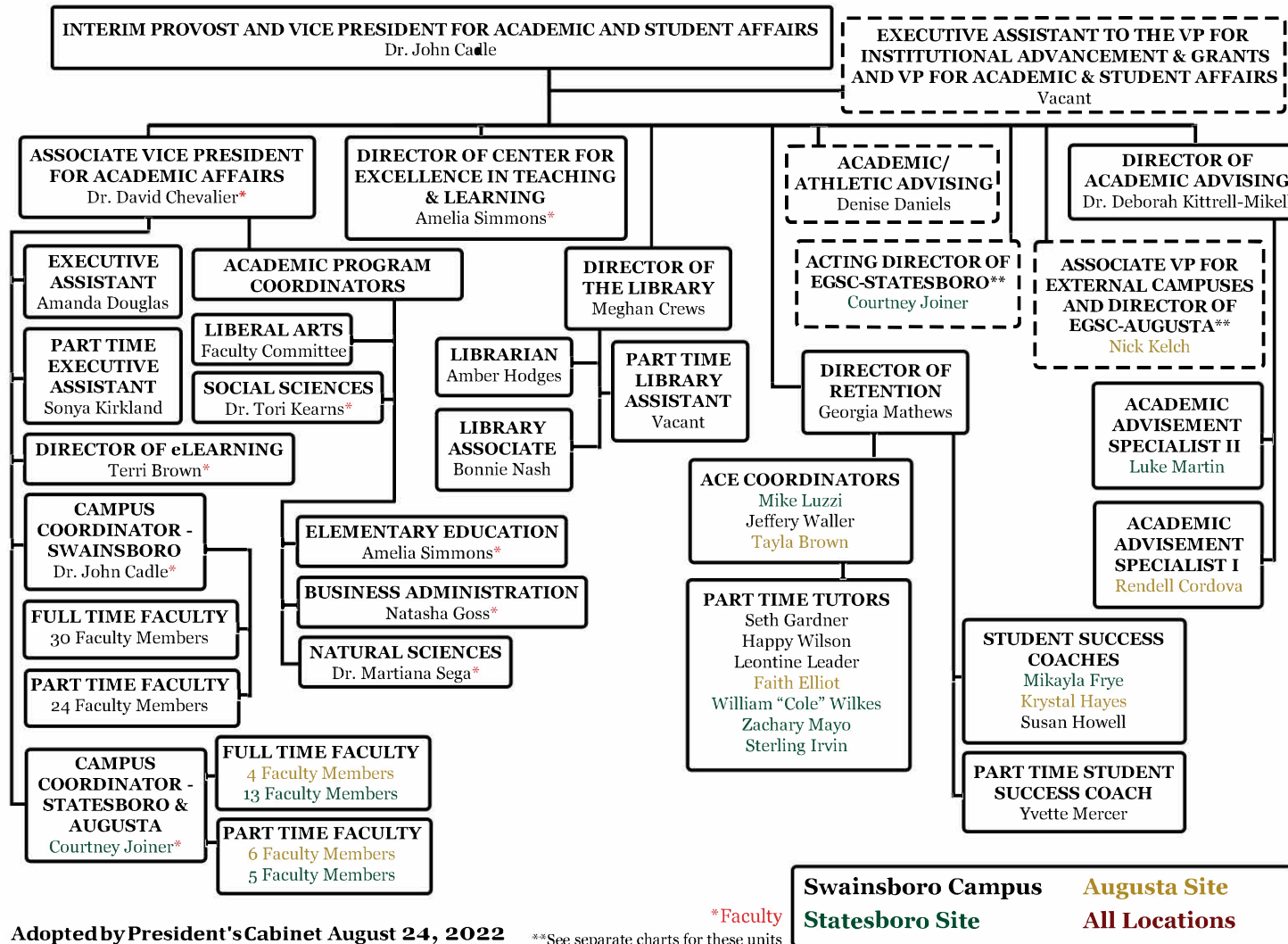
Adopted by President's Cabinet August 24, 2022

*See separate organization chart for each of the above units

Source: Office of the President

East Georgia State College Organization Charts

East Georgia State College - Academic Affairs Organizational Chart



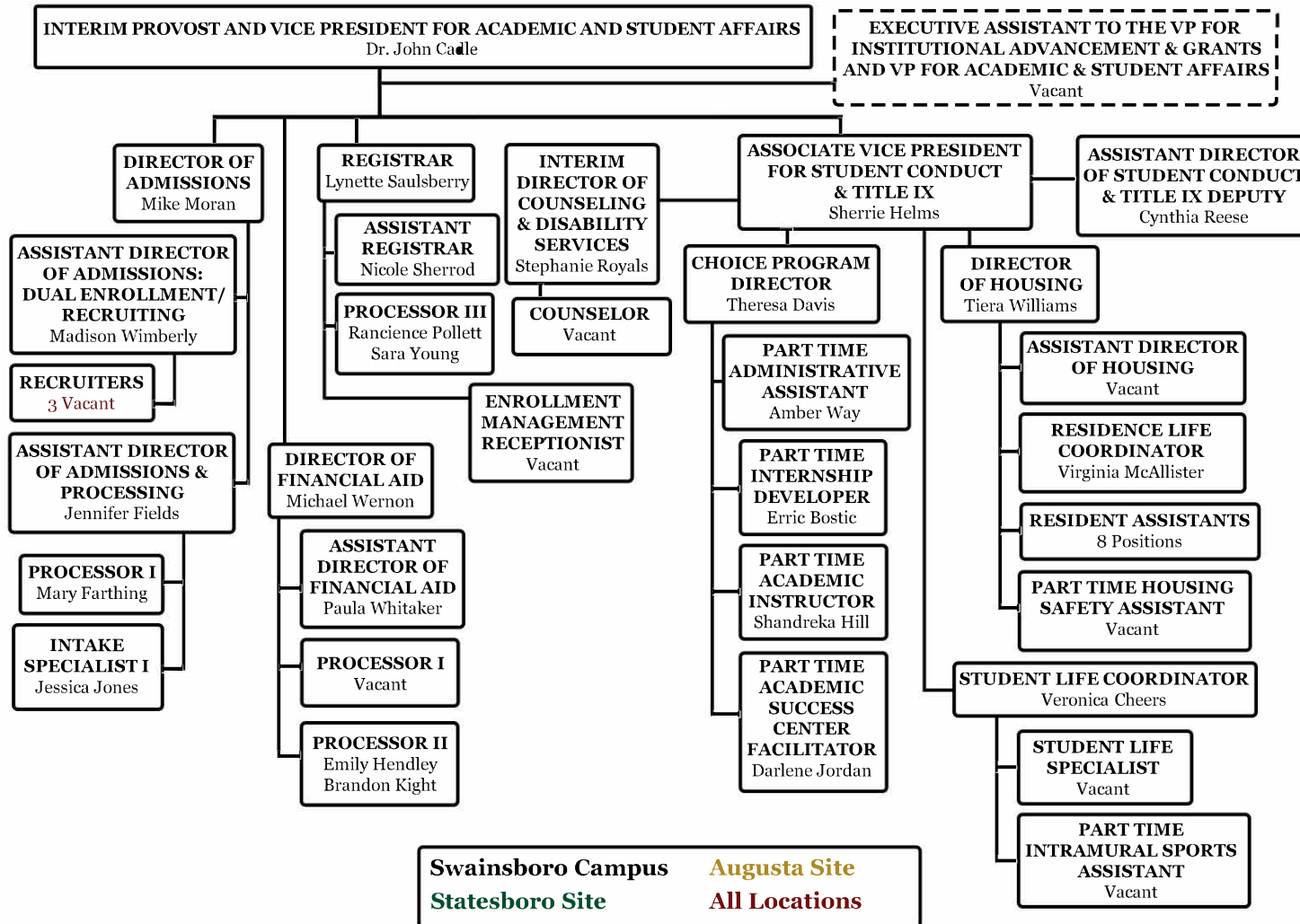
Adopted by President's Cabinet August 24, 2022

*Faculty
**See separate charts for these units

Swainsboro Campus	Augusta Site
Statesboro Site	All Locations

East Georgia State College Organization Charts

East Georgia State College - Student Affairs Organizational Chart



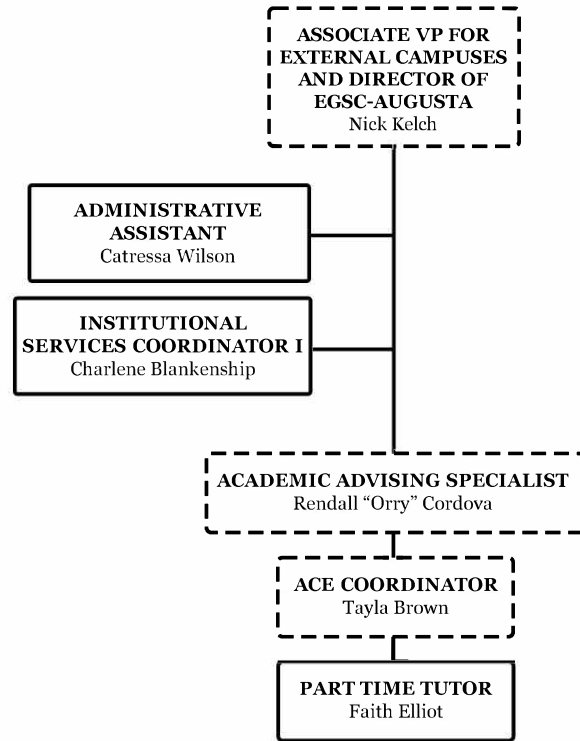
Adopted by President's Cabinet 8-23-2022

--- Joint Report

East Georgia State College Organization Charts

East Georgia State College - Augusta Organizational Chart

--- Joint Reporting

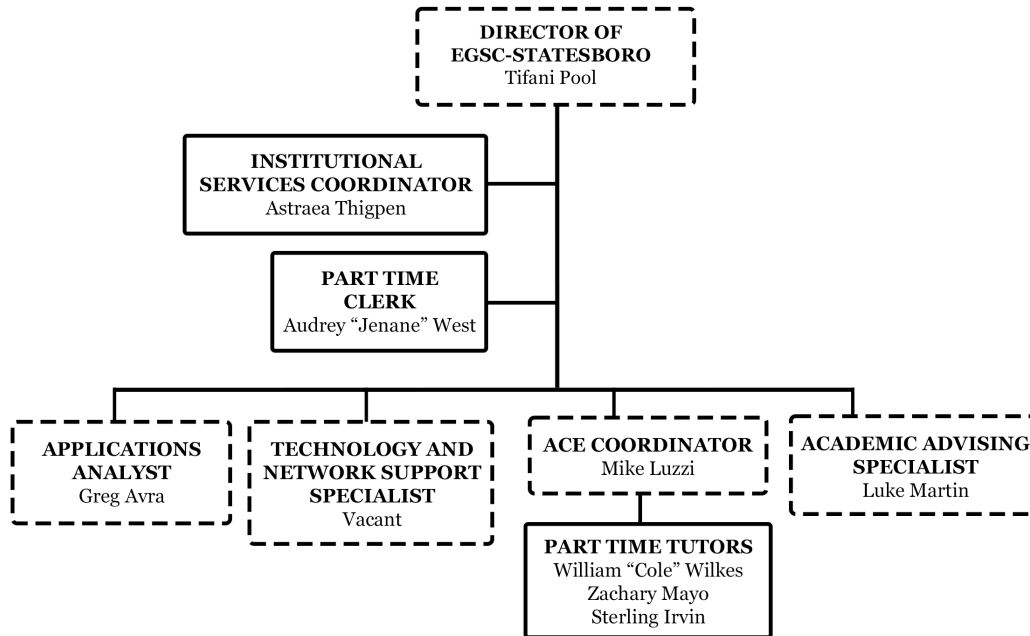


Adopted by President's Cabinet August 24, 2022

East Georgia State College Organization Charts

East Georgia State College - Statesboro Organizational Chart

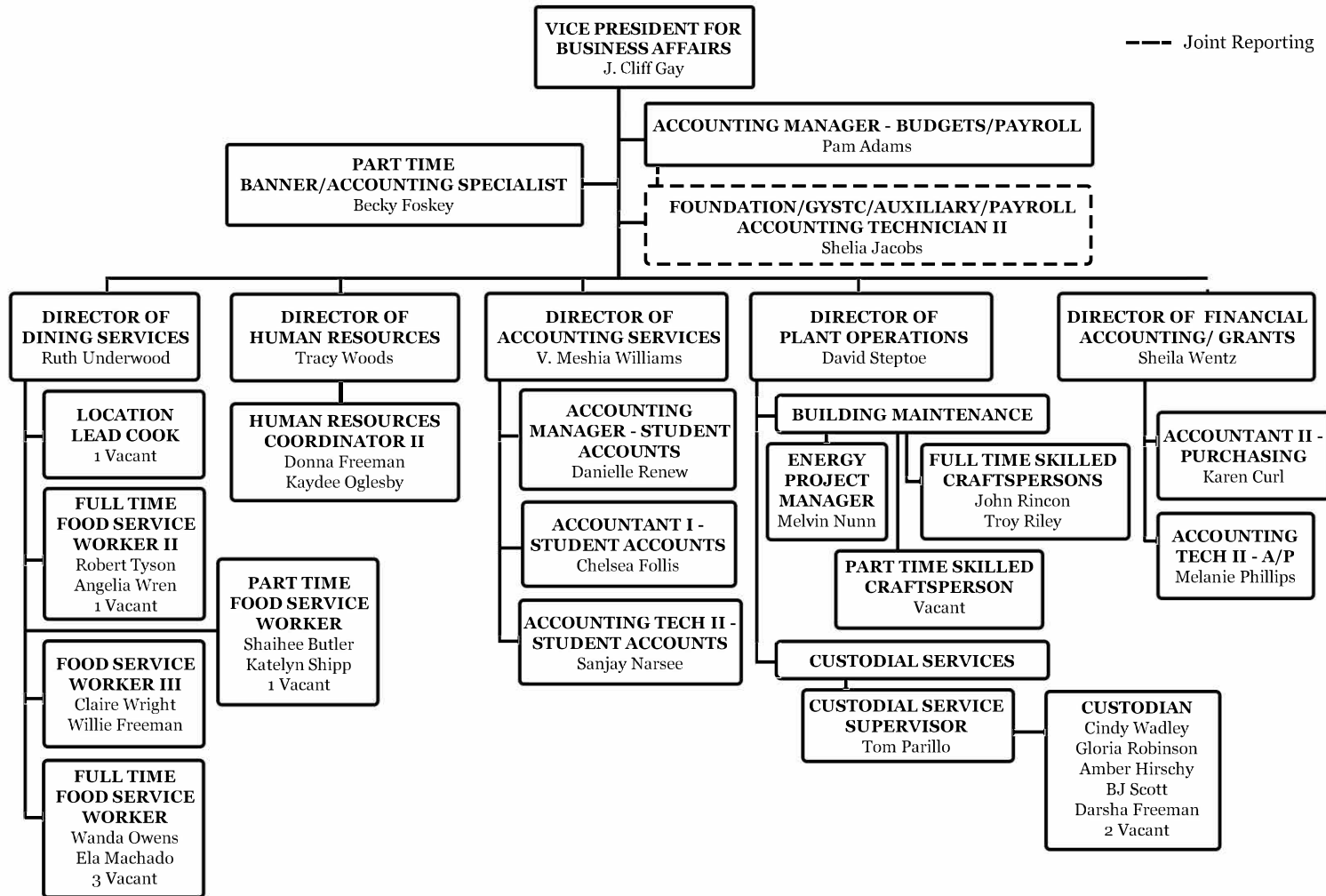
--- Joint Reporting



As of October 18, 2022

East Georgia State College Organization Charts

East Georgia State College - Business Affairs Organizational Chart

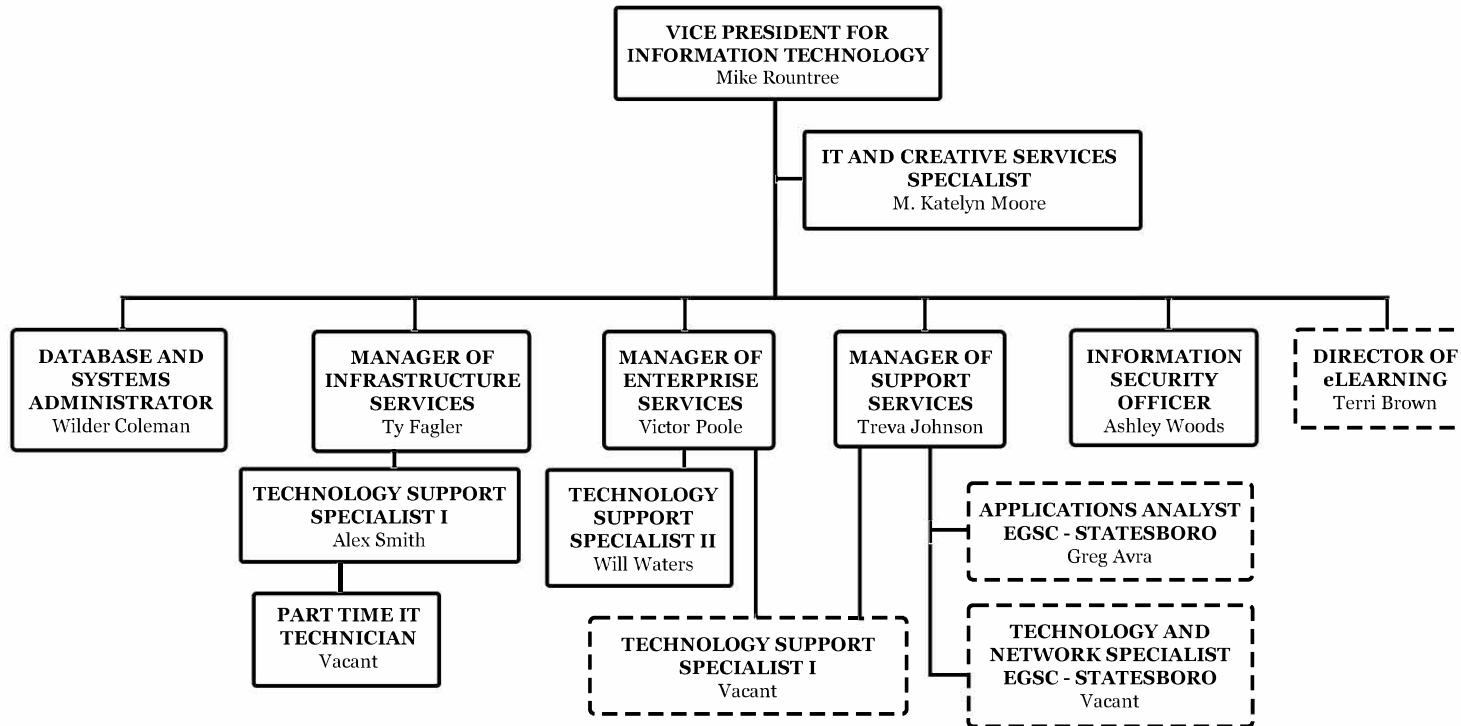


Adopted by President's Cabinet August 24, 2022

East Georgia State College Organization Charts

East Georgia State College - Information Technology Organizational Chart

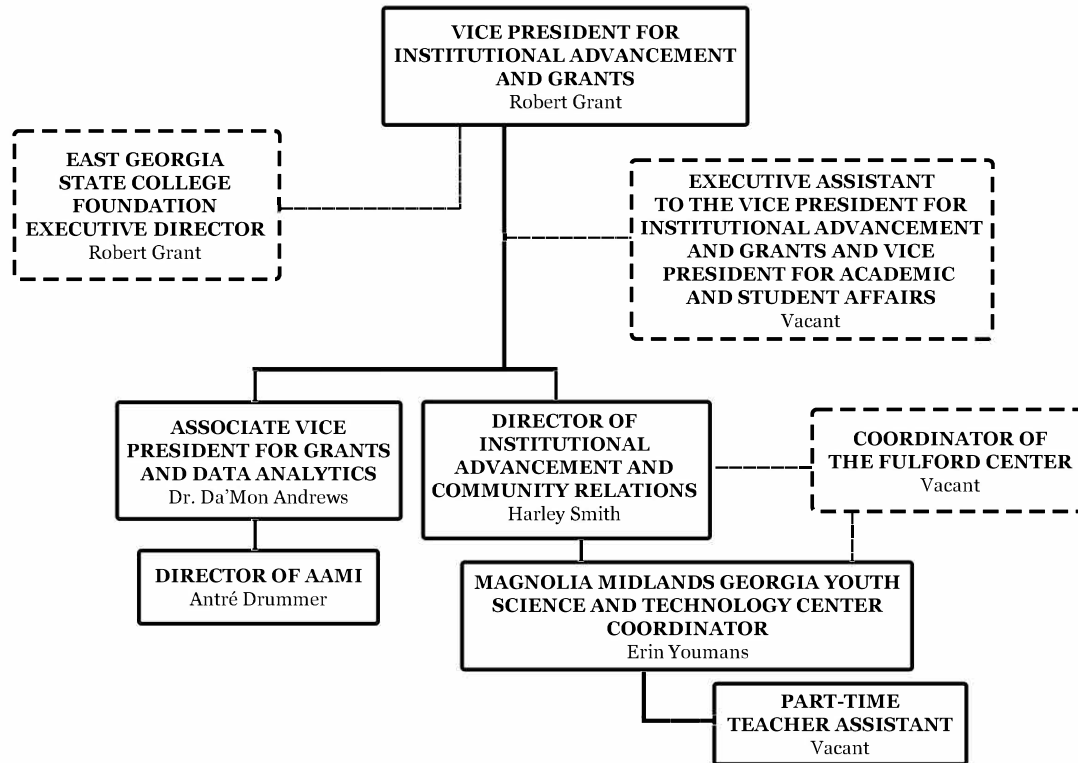
--- Joint Reporting



Adopted by President's Cabinet August 24 , 2022

East Georgia State College Organization Charts

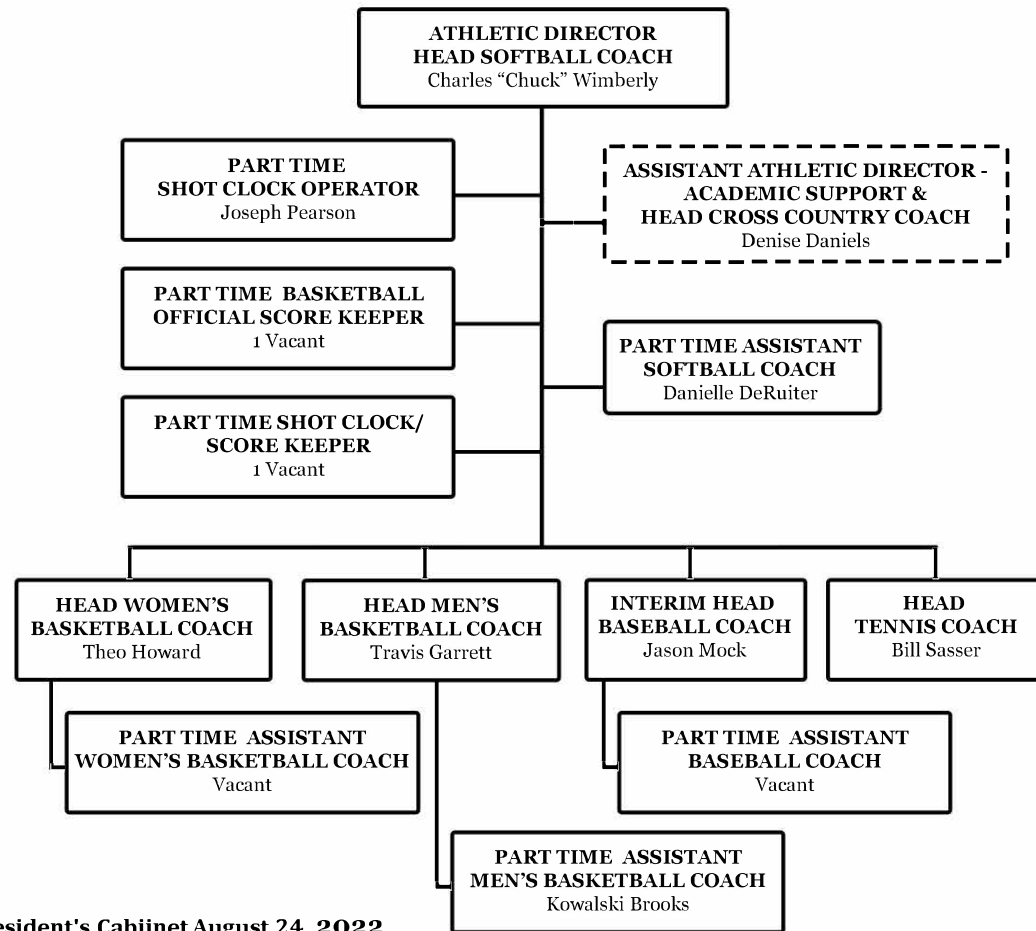
East Georgia State College - Institutional Advancement Organizational Chart



Adopted by President's Cabinet August 24, 2022

East Georgia State College Organization Charts

East Georgia State College - Athletic Department Organizational Chart

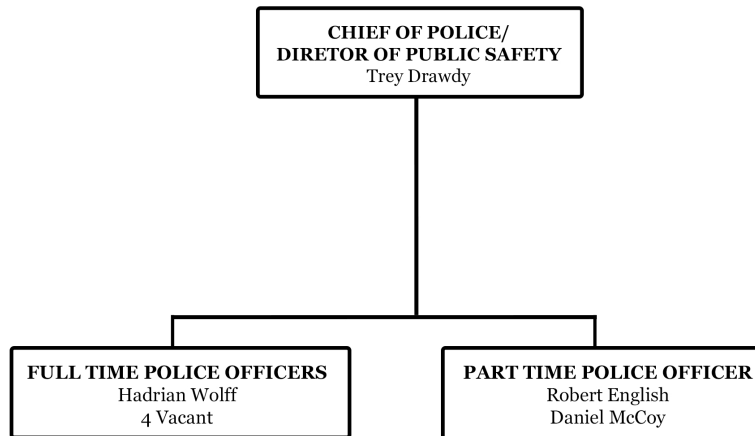


Adopted by President's Cabinet August 24, 2022

--- Joint Reporting

East Georgia State College Organization Charts

East Georgia State College - Police Department Organizational Chart



As of October 12, 2022

East Georgia State College Cabinet: October 2022

David Schechter	President of the College
Da'Mon Andrews	Associate Vice President for Grants and Data Analytics
John Cadle	Interim Provost/Vice President for Academic and Student Affairs
Trey Drawdy	Chief of Police and Director of Public Safety
Cliff Gay	Vice President for Business Affairs
Robert Grant	Vice President for Institutional Advancement
David Gribbin	Director of Strategic Planning and Institutional Research
Tifani Pool	Director of EGSC Statesboro
Nick Kelch	Associate Vice President for External Campuses
Mike Rountree	Vice President for Information Technology
Harley Smith	Director of Institutional Advancement and Community Relations
Mary Smith	Chief of Staff and Legal Counsel
Chuck Wimberly	Athletics Director

The East Georgia State College Foundation: 2021-22 Trustees

Last Name	First Name	Title/Alumnus	Status
McNeely	Richard	Chair/Alumnus	Elected
Gray	Milton	Vice-Chair/Alumnus	Elected
Key	Denny	Past Chair	Elected
Ray	Harriet	Secretary	Elected
Gay	Cliff	Treasurer/Alumnus	Ex-officio-voting
Schecter	Dr. David	President of EGSC	Ex-officio-voting
Kennedy	Norma	Executive Director	Ex-officio-voting
Andrews	Brandon		Elected
Denmark	Jennie Wren		Elected
Derden	Dr. John		Elected
Donaldson	Matt	Alumnus	Elected
Durden	Dustin		Elected
Fagler	Stephanie		Elected
Gilmer	Elizabeth		Elected
Gray	Susan		Elected
Jenkins	Donald		Elected
Johnson	Wade		Elected
Porter	Juanita		Elected
Rigdon	Steven		Elected
Rogers, Jr.	Bill		Elected
Sasser	Dr. Bobby		Elected
Schwabe	Charles		Elected
Singletary	Guy	Alumnus	Elected
Terwilliger	Toni	Alumnus	Elected
Warnock	Ken	Alumnus	Elected
Wilkes	Tammy	Alumnus	Elected

Source: EGSC Office of Institutional Advancement

ADMISSIONS

Applied, Accepted and Registered Fall Semester 2012-2021

Fall Semester	Applied	Accepted	Registered	% of Applied Accepted	% of Applied Registered	% of Accepted Registered
2012	2,840	1,596	1,276	56.2%	44.9%	79.9%
2013	2,674	1,539	1,239	57.6%	46.3%	80.5%
2014	2,726	1,506	1,268	55.2%	46.5%	84.2%
2015	3,083	1,785	1,422	57.9%	46.1%	79.7%
2016	3,043	1,843	1,520	60.6%	50.0%	82.5%
2017	2,667	1,666	1,311	62.5%	49.2%	78.7%
2018	3,040	2,457	1,498	80.8%	49.3%	61.0%
2019	3,167	2,338	1,335	73.8%	42.2%	57.1%
2020	3,365	2,573	1,044	76.5%	31.0%	40.6%
2021	2,111	1,752	1,123	82.9%	53.2%	64.1%

Source: EGSC Office of Admissions

Beginning Freshmen: Fall Semester 2012-2021

Fall Semesters	2012	2013	2014	2015	2016	2017	2018	2019	2020	2021
Beginning Freshmen	1,238	975	1,007	1,095	1,006	954	1,086	1,037	678	654

Mean Scholastic Aptitude Test (Old SAT) Scores for Beginning Freshmen: Fall Semester 2012-2021

Fall Semesters	2012	2013	2014	2015	2016	2017	2018	2019	2020	2021
Old SAT Average	863	870	873	864	864	856	877	915	857	993

Mean Scholastic Aptitude Test (New SAT) Scores for Beginning Freshmen: Fall Semester 2016-2021

Fall Semesters	2016	2017	2018	2019	2020	2021
New SAT Average	47	47	48	47	48	51

Source: EGSC Office of Strategic Planning and Institutional Research

Georgia High Schools of Beginning Freshmen: Fall 2021

High Schools	Augusta	Statesboro	Swainsboro	Total
Tattnall County High School		15	10	25
Jefferson County High School	4	3	13	20
Statesboro High School	2	16	2	20
Vidalia High School		6	14	20
Grovetown High School	14	1	3	18
Evans High School	13	1	2	16
Screven County High School		15	1	16
Southeast Bulloch County High School		13	3	16
Swainsboro High School		3	13	16
Lakeside High School-Evans	12	1		13
Academy Of Richmond County	7	5		12
Butler High School	6	1	5	12
Emanuel County Institute			12	12
Westside High School	8	1	2	11
Cross Creek High School	8		2	10
Subtotal: 15 High Schools, 10 or more				237
Subtotal: 251 High Schools, Less than 10				417
Total: 266 High Schools				654

Source: EGSC Office of Strategic Planning and Institutional Research

STUDENT FINANCIAL INFORMATION

Semester Tuition and Fees Fall 2021 – Spring 2022

In State Tuition and Fees

Credit Hours	In State Tuition	EGSC Augusta †		EGSC Statesboro ‡		Swainsboro	
		Fees	Tuition & Fees	Fees	Tuition & Fees	Fees	Tuition & Fees
15	1,425.00	965.00	2,390.00	1,167.00	2,592.00	428.00	1,853.00
14	1,330.00	965.00	2,295.00	1,167.00	2,497.00	428.00	1,758.00
13	1,235.00	965.00	2,200.00	1,167.00	2,402.00	428.00	1,663.00
12	1,140.00	965.00	2,105.00	1,167.00	2,307.00	428.00	1,568.00
11	1,045.00	965.00	2,010.00	1,167.00	2,212.00	428.00	1,473.00
10	950.00	965.00	1,915.00	1,167.00	2,117.00	428.00	1,378.00
9	855.00	965.00	1,820.00	1,167.00	2,022.00	428.00	1,283.00
8	760.00	965.00	1,725.00	1,167.00	1,927.00	428.00	1,188.00
7	665.00	965.00	1,630.00	1,167.00	1,832.00	428.00	1,093.00
6	570.00	965.00	1,535.00	1,167.00	1,737.00	428.00	998.00
5	475.00	965.00	1,440.00	1,167.00	1,642.00	428.00	903.00
4	380.00	865.00	1,245.00	1,067.00	1,447.00	328.00	708.00
3	285.00	765.00	1,050.00	300.00	585.00	195.00	480.00
2	190.00	765.00	955.00	300.00	490.00	195.00	385.00
1	95.00	765.00	860.00	300.00	395.00	195.00	290.00

EGSC Augusta †: Fees include \$615 Augusta University - Summerville fee at every credit hour level

EGSC Statesboro ‡: Fees include \$667 Georgia Sothern University fee for 4 or more credit hours

Out of State Tuition and Fees

Credit Hours	Out of State Tuition	EGSC Augusta †		EGSC Statesboro ‡		Swainsboro	
		Fees	Tuition & Fees	Fees	Tuition & Fees	Fees	Tuition & Fees
15	5,395.00	965.00	6,360.00	1,167.00	6,562.00	428.00	5,823.00
14	5,035.38	965.00	6,000.38	1,167.00	6,202.38	428.00	5,463.38
13	4,675.71	965.00	5,640.71	1,167.00	5,842.71	428.00	5,103.71
12	4,316.04	965.00	5,281.04	1,167.00	5,483.04	428.00	4,744.04
11	3,956.37	965.00	4,921.37	1,167.00	5,123.37	428.00	4,384.37
10	3,596.70	965.00	4,561.70	1,167.00	4,763.70	428.00	4,024.70
9	3,237.03	965.00	4,202.03	1,167.00	4,404.03	428.00	3,665.03
8	2,877.36	965.00	3,842.36	1,167.00	4,044.36	428.00	3,305.36
7	2,517.69	965.00	3,482.69	1,167.00	3,684.69	428.00	2,945.69
6	2,158.02	965.00	3,123.02	1,167.00	3,325.02	428.00	2,586.02
5	1,798.35	965.00	2,763.35	1,167.00	2,965.35	428.00	2,226.35
4	1,438.68	865.00	2,303.68	1,067.00	2,505.68	328.00	1,766.68
3	1,079.01	765.00	1,844.01	300.00	1,379.01	195.00	1,274.01
2	719.34	765.00	1,484.34	300.00	1,019.34	195.00	914.34
1	359.67	765.00	1,124.67	300.00	659.67	195.00	554.67

EGSC Six SACSCOC Peer Colleges

Atlanta Metropolitan State College (Atlanta, GA)

Florida Gateway College (Lake City, FL)

Georgia Highlands College (Rome, GA)

Lake-Sumter State College (Leesburg, FL)

Santa Fe College (Gainesville, FL)

South Georgia State College (Douglas, GA)

EGSC Fifteen IPEDS Peer Colleges:

Atlanta Metropolitan State College (Atlanta, GA)

Bismarck State College (Bismarck, ND)

Centralia College (Centralia, WA)

Clover Park Technical College (Lakewood, WA)

Columbia Basin College (Pasco, WA)

Florida Gateway College (Lake City, FL)

Georgia Highlands College (Rome, GA)

Kent State University at Ashtabula (Ashtabula, OH)

Kent State University at Tuscarawas (New Philadelphia, OH)

Lake-Sumter State College (Leesburg, FL)

Ohio University-Chillicothe Campus (Chillicothe, OH)

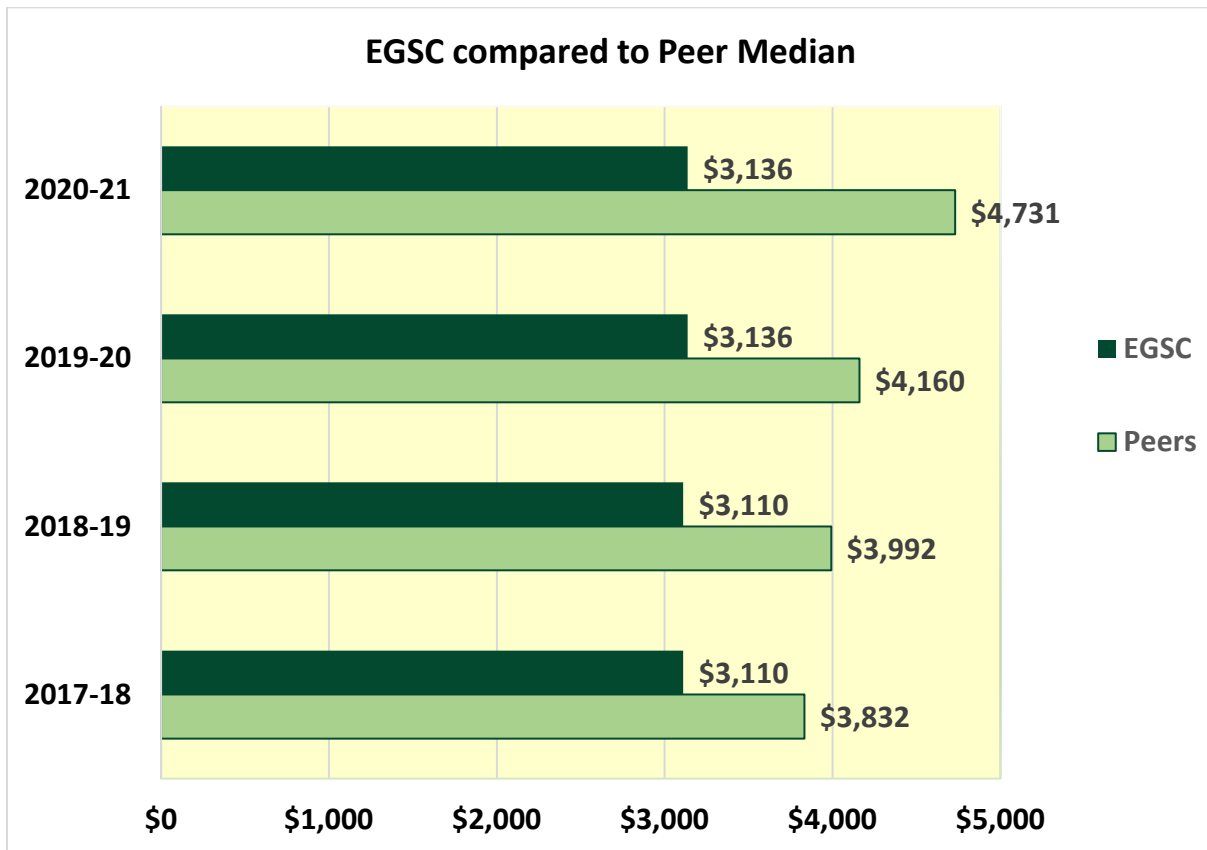
Ohio University-Eastern Campus (Saint Clairsville, OH)

Santa Fe College (Gainesville, FL)

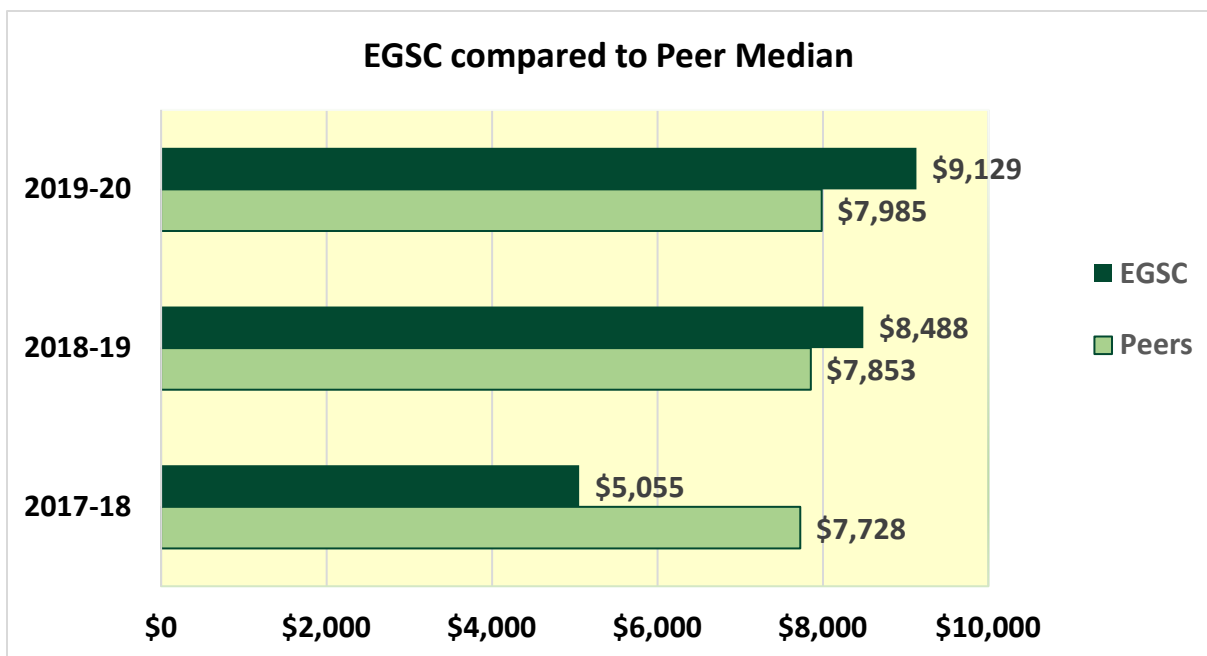
South Georgia State College (Douglas, GA)

Yakima Valley College (Yakima, WA)

Academic Year Tuition and Fees for Full-Time, First Time Undergraduates

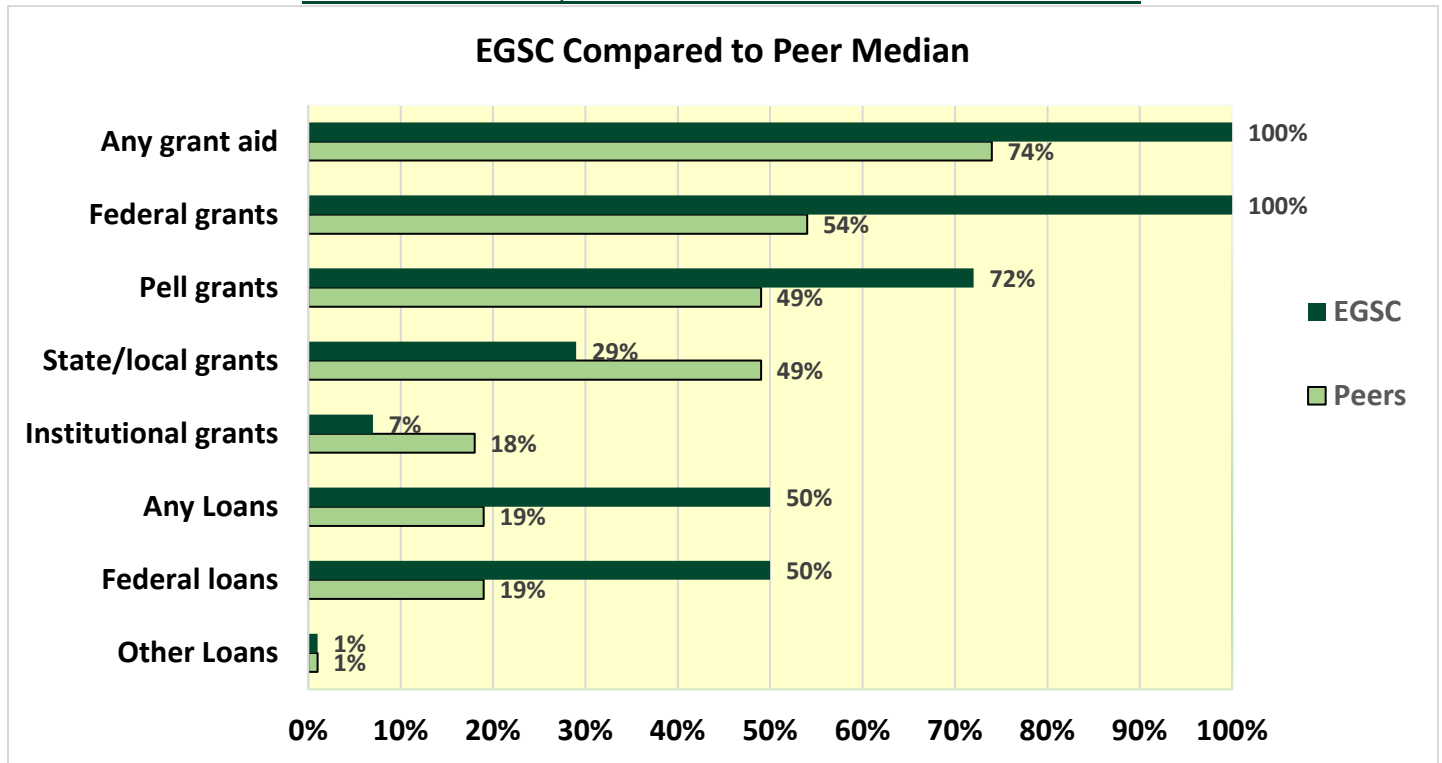


Academic Year Average Net Price of Attendance for Full-Time, First Time Undergraduates

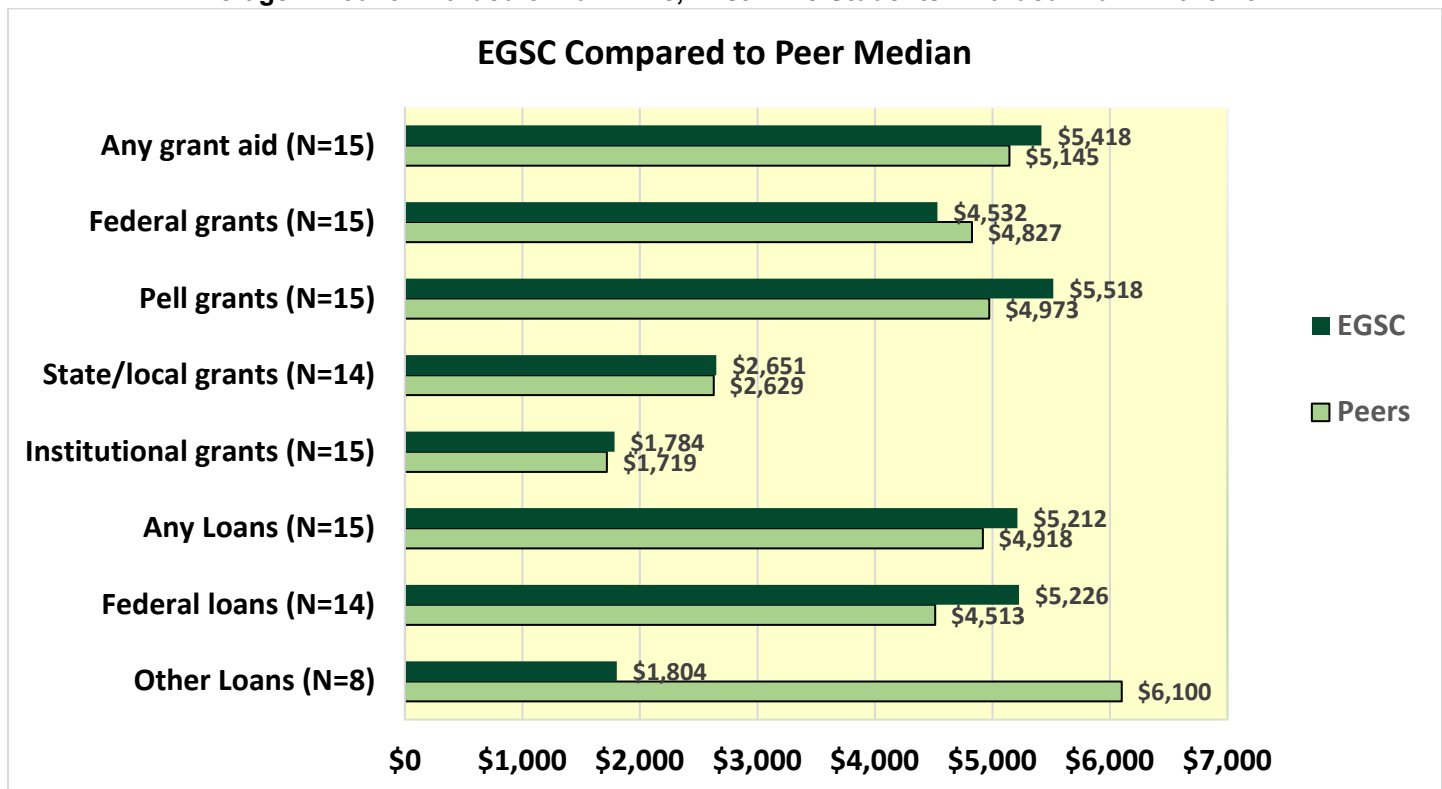


Source: IPEDS (Integrated Postsecondary Education Data System)

Percent of Full-Time, First-Time Students Awarded Aid FY 2019-20



Average Amount Awarded of Full-Time, First-Time Students Awarded Aid FY 2019-20



Source: IPEDS (Integrated Postsecondary Education Data System)

ACADEMIC INFORMATION

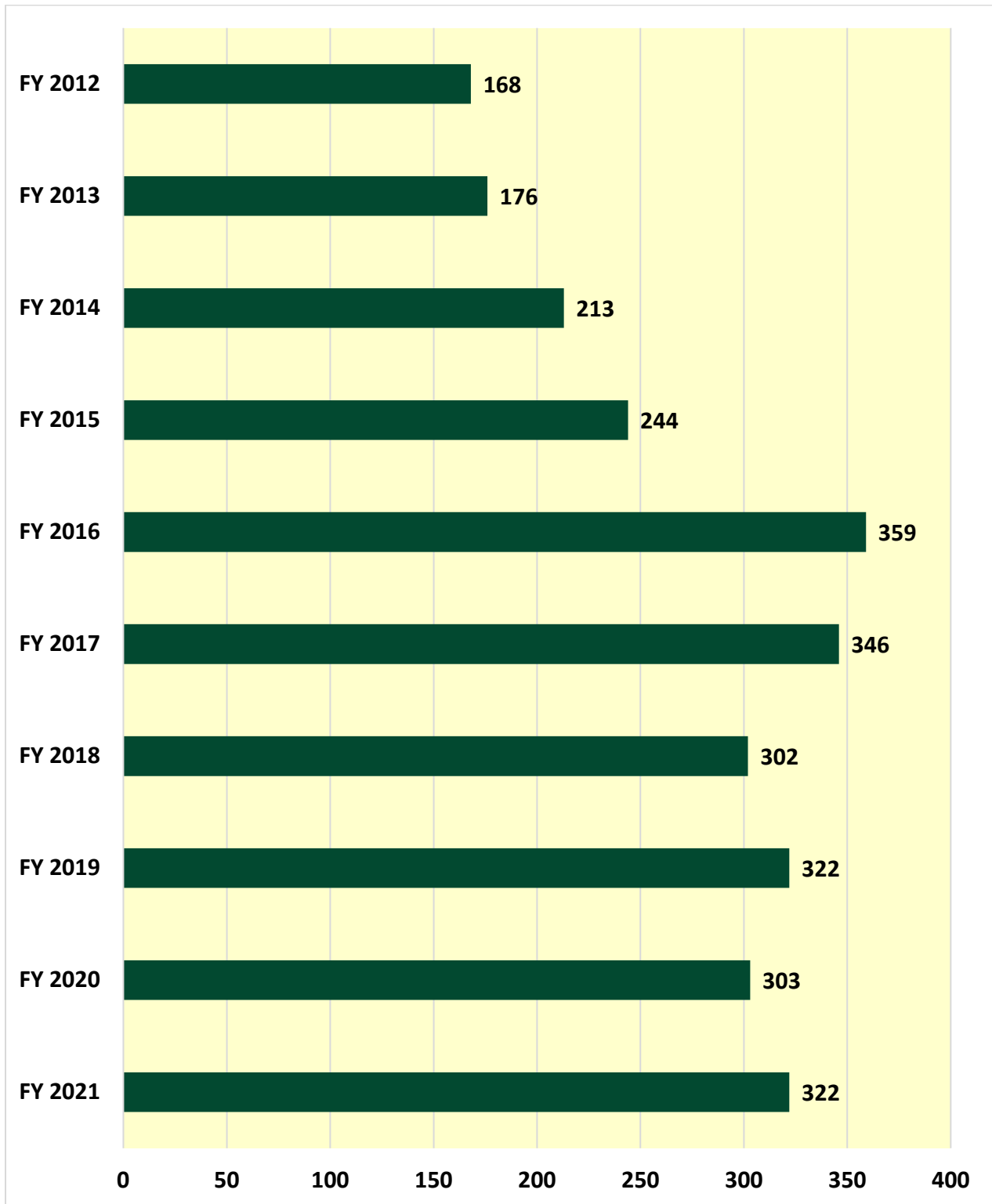
East Georgia State College Degree List

with Classification of Instructional Program (CIP) Codes

Degree Acronym	CIP CODE	Degree Level	Degree Description
Continuing Degree Programs			
AA	13041401	Associate	Associate of Arts in Elementary Education
AA	24010101	Associate	Associate of Arts in Liberal Arts
AA	45010101	Associate	Associate of Arts in Social Sciences
AS	30180101	Associate	Associate of Science in Natural Sciences
AS	52020101	Associate	Associate of Science in Business Administration
Degree Programs Closed to New Admissions August 11, 2021			
AA	09010001	Associate	Associate of Arts in Communication Arts
AA	23010101	Associate	Associate of Arts in English
AA	42010101	Associate	Associate of Arts in Psychology
AA	43010401	Associate	Associate of Arts in Criminal Justice
AA	43020202	Associate	Associate of Arts in Fire and Emergency Services Administration
AA	45100101	Associate	Associate of Arts in Political Science
AA	45110101	Associate	Associate of Arts in Sociology
AA	50070101	Associate	Associate of Arts in Art
AA	54010101	Associate	Associate of Arts in History
AS	26010101	Associate	Associate of Science in Biology
AS	27010101	Associate	Associate of Science in Mathematics
AS	36010101	Associate	Associate of Science in Recreation
AS	40050101	Associate	Associate of Science in Chemistry
BA	43020201	Bachelor	Bachelor of Arts with a Major in Fire and Emergency Services Administration
BS	26010101	Bachelor	Bachelor of Science with a Major in Biology
BS	51380105	Bachelor	Bachelor of Science with a Major in Nursing, RN to BSN
CER0	50060501	Certificate (< 1 Year)	Certificate of Less than One Year in Digital Photography

Source: EGSC Office of Strategic Planning and Institutional Research

EGSC Degrees Conferred FY 2012 to FY 2021



Source: EGSC Office of Strategic Planning and Institutional Research

Degrees Conferred by Academic Program FY 2017-18 – FY 2020-21

CIP Code and Degree	Academic Program	FY 2017-18	FY 2018-19	FY 2019-20	FY 2020-21
24.0101. Associate of Arts	Liberal Arts (Core Curriculum)	200	163	151	136
42.0101. Associate of Arts	Psychology**	29	31	38	37
52.0201. Associate of Science	Business Administration*	15	25	31	35
51.3801. Bachelor of Science	Nursing, RN to BSN**	-	22	11	10
13.0414. Associate of Arts	Elementary Education*†	13	14	17	37
45.1101. Associate of Arts	Sociology**	14	13	8	9
43.0104. Associate of Arts	Criminal Justice**	10	11	9	19
54.0101. Associate of Arts	History**	3	10	1	6
40.0501. Associate of Science	Chemistry**	2	6	5	5
45.1001. Associate of Arts	Political Science**	4	5	3	1
50.0701. Associate of Arts	Art**	3	4	6	7
26.0101. Associate of Science	Biology**	1	4	5	7
26.0101. Bachelor of Science	Biology	3	2	3	3
43.0202. Associate of Arts	FESA**‡	1	2	3	2
43.0202. Bachelor of Arts	FESA**‡	2	3	7	2
23.0101. Associate of Arts	English**	-	3	1	1
09.0100. Associate of Arts	Communication Arts**	2	2	3	4
27.0101. Associate of Science	Mathematics**	-	2	1	1
Total		302	322	303	322
Associate Degrees		297	295	282	307
Bachelor Degrees		5	27	21	15

*Academic Programs begun Fall Semester 2017

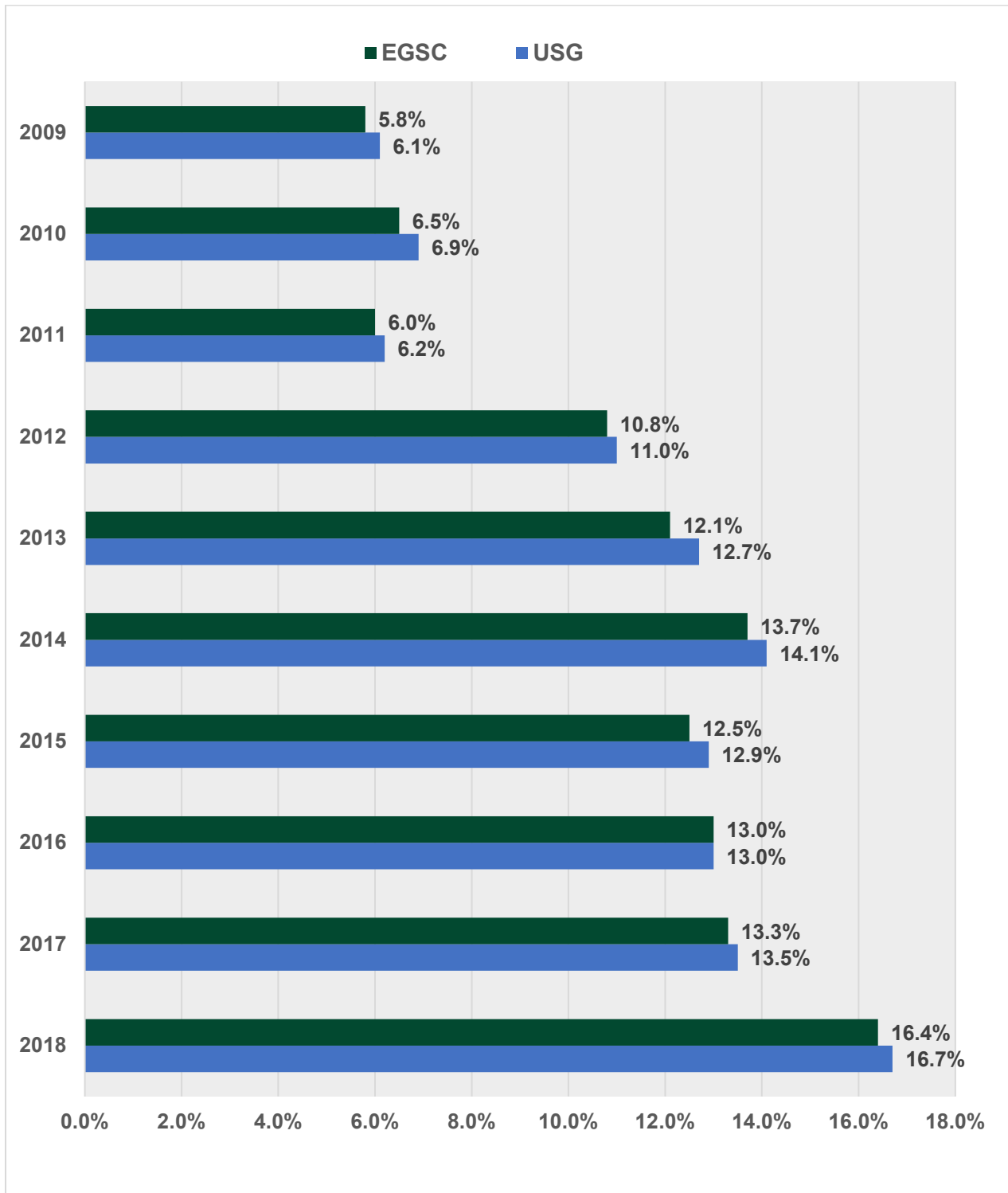
** Academic Programs begun Fall Semester 2017 and closed to new admissions August 11, 2021

†Formally Early Childhood Education

‡Fire and Emergency Services Administration

Source: EGSC Office of Strategic Planning and Institutional Research

EGSC/USG 3 Year Graduation Rates for First-Time, Full-Time Fall 2009 – 2018 Cohorts



Source: University System of Georgia Office of Research and Policy Analysis

Distribution of Grades by Class: Academic Year 2020-21

Fall 2020	A	B	C	D	F	I	IP	W	WF	Total
Freshman	22.2%	15.4%	13.5%	6.7%	31.6%	0.1%	3.2%	6.1%	1.1%	100.0%
Sophomore	34.4%	24.4%	15.1%	7.6%	12.7%	0.0%	0.1%	5.2%	0.4%	100.0%
Junior	38.2%	27.9%	17.5%	6.5%	5.2%	0.1%	0.0%	4.4%	0.1%	100.0%
Senior	46.7%	21.8%	18.2%	3.0%	7.3%	0.6%	0.0%	2.4%	0.0%	100.0%
Overall	28.1%	19.6%	14.5%	6.9%	22.6%	0.1%	1.8%	5.6%	0.8%	100.0%

Spring 2021	A	B	C	D	F	I	IP	W	WF	Total
Freshman	19.7%	17.4%	12.9%	6.6%	33.1%	0.1%	1.7%	6.4%	1.9%	100.0%
Sophomore	32.8%	25.0%	14.8%	6.7%	15.2%	0.2%	0.0%	5.0%	0.2%	100.0%
Junior	51.0%	24.2%	11.5%	4.2%	6.9%	0.0%	0.0%	1.8%	0.3%	100.0%
Senior	63.4%	17.8%	7.0%	2.3%	5.2%	0.0%	0.0%	4.2%	0.0%	100.0%
Overall	30.5%	21.1%	13.2%	6.2%	21.9%	0.1%	0.8%	5.2%	1.0%	100.0%

Source: EGSC Office of Strategic Planning and Institutional Research

Participation in Education Abroad at the East Georgia State College: Academic Years 2009-10 through 2018-19 (Source: EGSC Study Abroad Director)

EGSC Study Abroad Program (interrupted by COVID-19 in 2020)	No. Students 2010-2019
EGSC Study Abroad Students by Location	
Costa Rica (UGA Campus)	56
Italy	6
Paris (European Council)	2
Cuba	1
South Korea (Council on International Education Exchange)	1
EGSC Study Abroad Students by Ethnicity	
White (Non-Hispanic)	53
African American	10
Hispanic	3

Library Resources FY 2019-20 (Source: IPEDS EGSC Academic Libraries Spring 2021 Survey)

Library Collections/Circulation	Physical Collection	Digital/Electronic Collection
Books	47,307	499,162
Databases		250
Media	1,425	42,660
Serials	43	91,268
Total Collection	48,775	633,340
Library Circulation	4,458	150,521

Library Visitors, Fiscal Years 2016-17 to 2020-21

Fiscal Years	FY 2016-17	FY 2017-18	FY 2018-19	FY 2019-20	FY 2020-21
Total Visits	91,179	85,885	81,265	72,026	22,753

Source: EGSC Library

Credits Hours Earned to Attempted by Semester and Course Delivery Summer 2011 – Spring 2021

Semester	Credits Earned	Credits Attempted	Percent Completion
Summer 2011	5,810	8,475	68.6%
Summer 2012	4,239	6,131	69.1%
Summer 2013	4,506	5,889	76.5%
Summer 2014	3,861	4,771	80.9%
Summer 2015	4,069	5,002	81.3%
Summer 2016	4,472	5,573	80.2%
Summer 2017	4,646	5,644	82.3%
Summer 2018	4,769	5,860	81.4%
Summer 2019	4,469	5,489	81.4%
Summer 2020	4,850	5,951	81.5%
Fall 2011	23,003	40,948	56.2%
Fall 2012	23,336	34,898	66.9%
Fall 2013	23,713	34,040	69.7%
Fall 2014	24,411	34,955	69.8%
Fall 2015	26,192	36,147	72.5%
Fall 2016	26,793	36,400	73.6%
Fall 2017	25,421	34,698	73.3%
Fall 2018	23,802	33,698	70.6%
Fall 2019	22,706	31,817	71.4%
Fall 2020	17,959	26,256	68.4%
Spring 2012	21,787	36,133	60.3%
Spring 2013	21,161	31,411	67.4%
Spring 2014	21,383	30,985	69.0%
Spring 2015	21,924	30,568	71.7%
Spring 2016	23,176	31,649	73.2%
Spring 2017	22,845	31,157	73.3%
Spring 2018	21,684	29,758	72.9%
Spring 2019	21,102	29,165	72.4%
Spring 2020	20,179	27,252	74.0%
Spring 2021	14,091	19,884	70.9%
Total Credit Hours	492,359	700,604	70.3%
Taking Face to Face Only Total	247,985	366,508	67.7%
Taking Online Only Total	55,286	78,123	70.8%
Taking Face to Face and Online Total	189,088	255,973	73.9%

Source: EGSC Office of Strategic Planning and Institutional Research

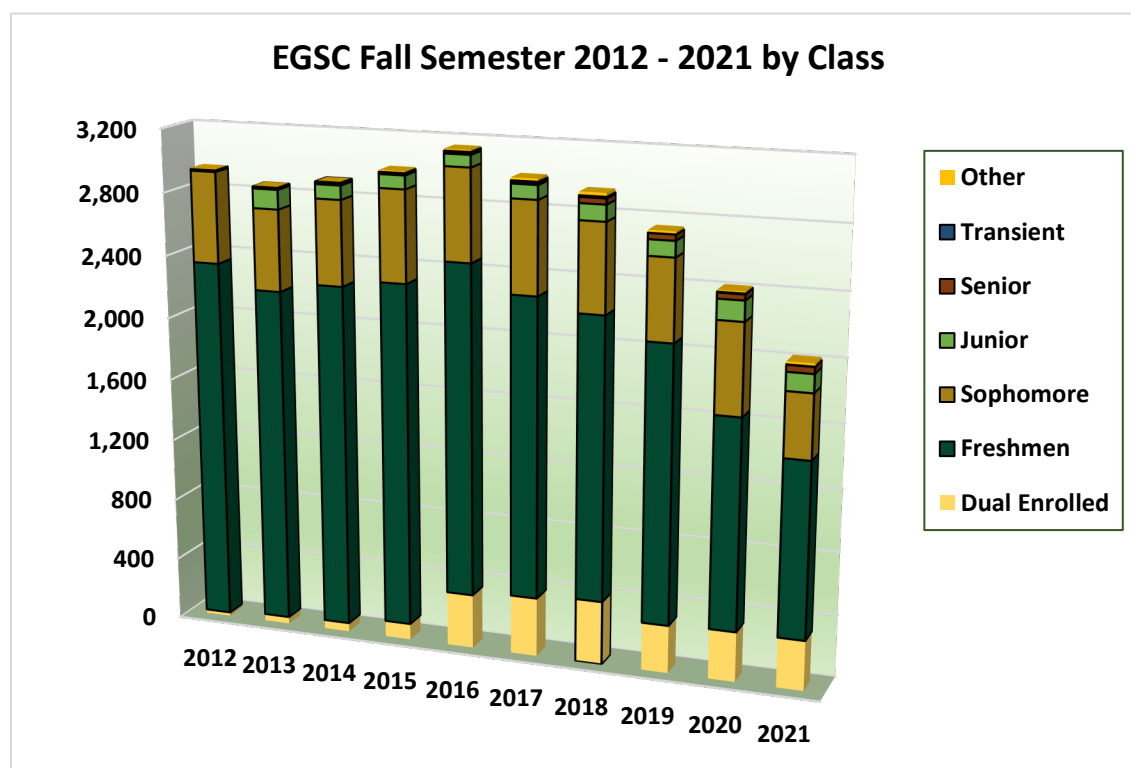
ENROLLMENT

Enrollment Counts by Class Level: Fall Semesters 2012-2021

Fall Semester	2012	2013	2014	2015	2016	2017	2018	2019	2020	2021
Dual Enrollment	23	44	56	104	349	379	408	307	320	320
Freshman	2,323	2,152	2,203	2,203	2,116	1,913	1,801	1,765	1,341	1,118
Sophomore	581	520	542	583	581	584	562	514	574	407
Junior		123	89	85	76	89	102	99	127	115
Senior		8	9	7	12	10	37	37	36	42
Transient	10	4	7	7	5	9	9	1	5	2
Other	7	6	4	12	13	19	23	18	12	19
Fall Term Total Enrollment	2,944	2,857	2,910	3,001	3,152	3,003	2,942	2,741	2,415	2,023

Enrollment Percentages by Class Level: Fall Semesters 2012-2021

Fall Semester	2012	2013	2014	2015	2016	2017	2018	2019	2020	2021
Dual Enrolled	0.8%	1.5%	1.9%	3.5%	11.1%	12.6%	13.9%	11.2%	13.3%	15.8%
Freshman	78.9%	75.3%	75.7%	73.4%	67.1%	63.7%	61.2%	64.4%	55.5%	55.3%
Sophomore	19.7%	18.2%	18.6%	19.4%	18.4%	19.4%	19.1%	18.8%	23.8%	20.1%
Junior		4.3%	3.1%	2.8%	2.4%	3.0%	3.5%	3.6%	5.3%	5.7%
Senior		0.3%	0.3%	0.2%	0.4%	0.3%	1.3%	1.3%	1.5%	2.1%
Transient	0.3%	0.1%	0.2%	0.2%	0.2%	0.3%	0.3%	0.0%	0.2%	0.1%
Other	0.2%	0.2%	0.1%	0.4%	0.4%	0.6%	0.8%	0.7%	0.5%	0.9%



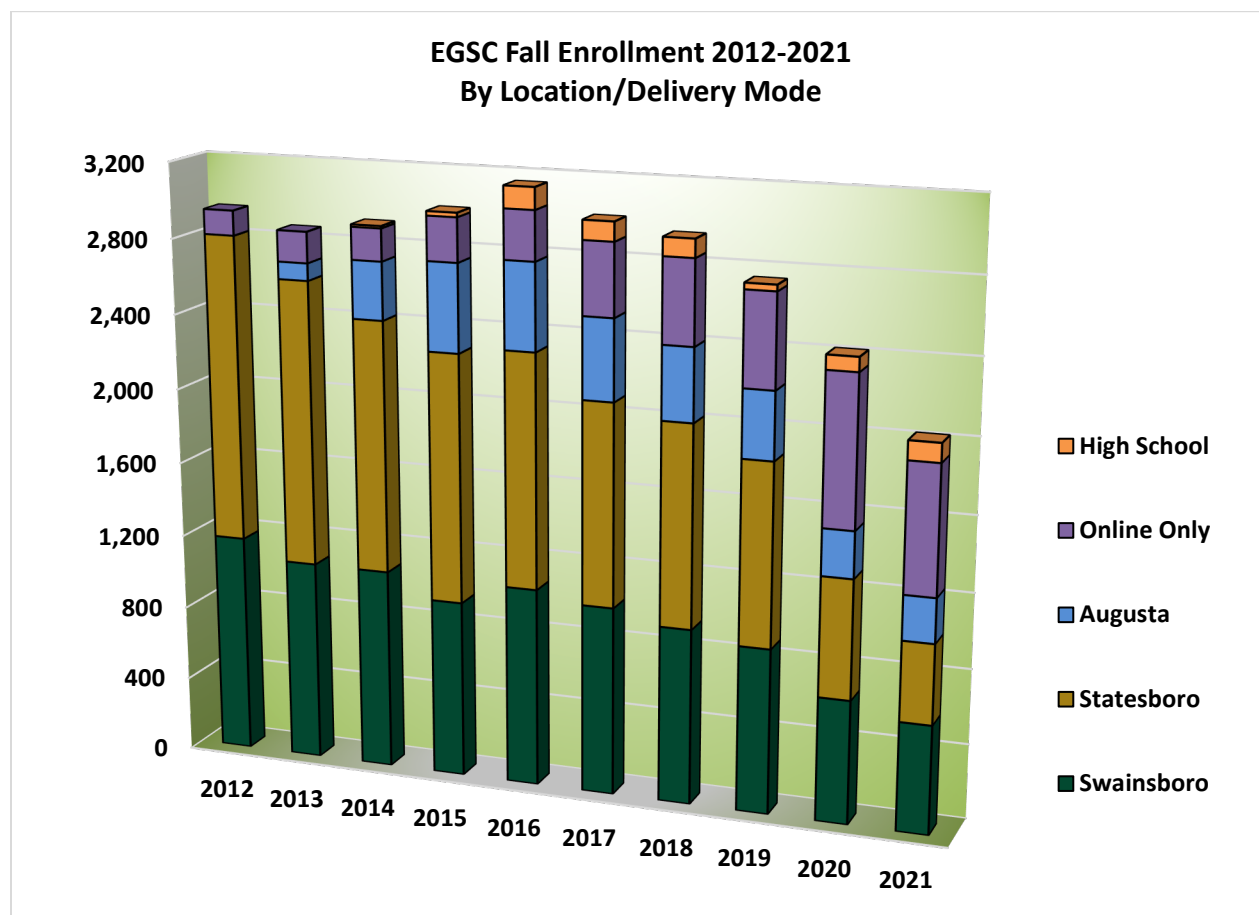
Source: EGSC Office of Strategic Planning and Institutional Research

Enrollment Counts by Location/Delivery Mode: Fall Semester 2012-2021

Fall Semester	2012	2013	2014	2015	2016	2017	2018	2019	2020	2021
High School			12	23	115	101	96	33	76	100
Online Only	131	164	171	232	260	383	443	493	797	680
Augusta		92	307	468	462	429	386	357	246	236
Statesboro	1,635	1,523	1,343	1,327	1,249	1,078	1,075	973	634	425
Swainsboro	1,178	1,078	1,077	951	1,066	1,012	942	885	662	582
Total Enrollment	2,944	2,857	2,910	3,001	3,152	3,003	2,942	2,741	2,415	2,023

Enrollment Percentages by Location/Delivery Mode: Fall Semester 2012-2021

Fall Semester	2012	2013	2014	2015	2016	2017	2018	2019	2020	2021
High School			0.4%	0.8%	3.6%	3.4%	3.3%	1.2%	3.1%	4.9%
Online Only	4.4%	5.7%	5.9%	7.7%	8.2%	12.8%	15.1%	18.0%	33.0%	33.6%
Augusta		3.2%	10.5%	15.6%	14.7%	14.3%	13.1%	13.0%	10.2%	11.7%
Statesboro	55.5%	53.3%	46.2%	44.2%	39.6%	35.9%	36.5%	35.5%	26.3%	21.0%
Swainsboro	40.0%	37.7%	37.0%	31.7%	33.8%	33.7%	32.0%	32.3%	27.4%	28.8%



Source: EGSC Office of Strategic Planning and Institutional Research

Fall Semester 2021 Counts of Gender and Ethnicity by Class Level

Demographic Profile by Class	Freshman	Sophomore	Junior	Senior	Total
Total Enrollment by Class	1,452	413	116	42	2,023
Female	806	253	73	29	1,161
White (Non-Hispanic Origin)	357	107	30	18	512
Black or African American	333	111	38	9	491
Multiracial	78	23	3	1	105
Hispanic	17	6	2	1	26
Asian	11	1	0		12
American Indian or Alaskan Native	2	1			3
Native Hawaiian/Pacific Island	2	0			2
Ethnicity Unknown	6	4			10
Male	646	160	43	13	862
White (Non-Hispanic Origin)	270	68	27	9	374
Black or African American	277	65	8	2	352
Multiracial	62	16	6	1	85
Hispanic	18	3	1	0	22
Asian	5	2	1		8
American Indian or Alaskan Native	2	3	0		5
Native Hawaiian/Pacific Island	1	0			1
Ethnicity Unknown	11	3		1	15

Fall Semester 2021 Percentages of Total Enrollment Gender and Ethnicity by Class Level

Demographic Profile by Class	Freshman	Sophomore	Junior	Senior	Total
Total Enrollment by Class	71.8%	20.4%	5.7%	2.1%	100.0%
Female	39.8%	12.5%	3.6%	1.4%	57.4%
White (Non-Hispanic Origin)	17.6%	5.3%	1.5%	0.9%	25.3%
Black or African American	16.5%	5.5%	1.9%	0.4%	24.3%
Multiracial	3.9%	1.1%	0.1%	0.0%	5.2%
Hispanic	0.8%	0.3%	0.1%	0.0%	1.3%
Asian	0.5%	0.0%	0.0%		0.6%
Am. Indian or Alaskan Native	0.1%	0.0%			0.1%
Native Hawaiian/Pacific Island	0.1%	0.0%			0.1%
Ethnicity Unknown	0.3%	0.2%			0.5%
Male	31.9%	7.9%	2.1%	0.6%	42.6%
White (Non-Hispanic Origin)	13.3%	3.4%	1.3%	0.4%	18.5%
Black or African American	13.7%	3.2%	0.4%	0.1%	17.4%
Multiracial	3.1%	0.8%	0.3%	0.0%	4.2%
Hispanic	0.9%	0.1%	0.0%	0.0%	1.1%
Asian	0.2%	0.1%	0.0%		0.4%
Am. Indian or Alaskan Native	0.1%	0.1%	0.0%		0.2%
Native Hawaiian/Pacific Island	0.0%	0.0%			0.0%
Ethnicity Unknown	0.5%	0.1%		0.0%	0.7%

Source: EGSC Office of Strategic Planning and Institutional Research

Fall Semester 2021 Counts of Gender and Ethnicity by Location/Mode of Delivery

Gender/Ethnicity	Augusta	Statesboro	Swainsboro	Online Only	High School	Total
Female	118	220	313	444	66	1,161
White (Non-Hispanic Origin)	37	100	146	193	36	512
Black or African American	57	82	136	198	18	491
Multiracial	13	25	20	36	11	105
Hispanic	3	9	6	8	0	26
Asian	7	1	1	3		12
Am. Indian or Alaskan	0		1	2		3
Native Hawaiian/Pacific			0	2		2
Ethnicity unknown			1	3		3
Male	118	205	269	236	34	862
White (Non-Hispanic Origin)	23	104	118	103	26	374
Black or African American	68	73	107	101	3	352
Multiracial	15	15	28	23	4	85
Hispanic	8	4	7	3	0	22
Asian	1	3	2	1	1	8
Am. Indian or Alaskan	0	3	2	0		5
Native Hawaiian/Pacific	0	0	1			1
Ethnicity unknown	3	3	4			5
Total	236	425	582	680	100	2,023

Fall Semester 2021 Percentages of Total Enrollment by Gender and Ethnicity for Location/Mode of Delivery

Gender/Ethnicity	Augusta	Statesboro	Swainsboro	Online Only	High School	Total
Female	5.8%	10.9%	15.5%	21.9%	3.3%	57.4%
White (Non-Hispanic Origin)	1.8%	4.9%	7.2%	9.5%	1.8%	25.3%
Black or African American	2.8%	4.1%	6.7%	9.8%	0.9%	24.3%
Multiracial	0.6%	1.2%	1.0%	1.8%	0.5%	5.2%
Hispanic	0.1%	0.4%	0.3%	0.4%	0.0%	1.3%
Asian	0.3%	0.0%		0.1%		0.6%
Am. Indian or Alaskan	0.0%			0.1%		0.1%
Native Hawaiian/Pacific				0.1%		0.1%
Ethnicity unknown		0.1%	0.1%	0.1%		0.5%
Male	5.8%	10.1%	13.3%	11.7%	1.7%	42.6%
White (Non-Hispanic Origin)	1.1%	5.1%	5.8%	5.1%	1.3%	18.5%
Black or African American	3.4%	3.6%	5.3%	5.0%	0.1%	17.4%
Multiracial	0.7%	0.7%	1.4%	1.1%	0.2%	4.2%
Hispanic	0.4%	0.2%	0.3%	0.1%	0.0%	1.1%
Asian	0.0%	0.1%	0.1%	0.0%		0.4%
Am. Indian or Alaskan	0.0%	0.1%	0.1%			0.2%
Native Hawaiian/Pacific	0.0%	0.0%	0.0%			0.0%
Ethnicity unknown	0.1%	0.1%	0.2%	0.2%		0.7%

Source: EGSC Office of Strategic Planning and Institutional Research

Enrolled Georgia Residents County by Total Enrollment and by Assigned Campus: Fall 2021

Georgia County	Enrolled	% Total Enrollment	EGSC Augusta		
			Georgia County	Enrolled	% Enrollment
Columbia	243	12.0%	Columbia	193	47.4%
Richmond	236	11.7%	Richmond	147	36.1%
Emanuel	172	8.5%	26 Other GA Counties	52	12.8%
Bulloch	167	8.3%	Total from Georgia	392	96.3%
Chatham	75	3.7%	Total Out of State	15	3.7%
Jefferson	68	3.4%	Total	407	100.0%
Toombs	67	3.3%	EGSC Statesboro		
Tattnall	66	3.3%	Bulloch	124	20.0%
Screven	57	2.8%	Screven	48	7.7%
Effingham	53	2.6%	Tattnall	37	6.0%
Candler	52	2.6%	Effingham	33	5.3%
Johnson	39	1.9%	Chatham	32	5.2%
Washington	39	1.9%	Richmond	26	4.2%
Burke	39	1.9%	Evans	23	3.7%
Evans	37	1.8%	Bryan	20	3.2%
Bryan	36	1.8%	Candler	19	3.1%
Jenkins	28	1.4%	Columbia	18	2.9%
Gwinnett	27	1.3%	Burke	16	2.6%
Fulton	26	1.3%	Toombs	16	2.6%
Henry	25	1.2%	Appling	12	1.9%
Cobb	22	1.1%	54 Other GA Counties	187	30.2%
Bibb	22	1.1%	Total from Georgia	611	98.5%
DeKalb	20	1.0%	Total Out of State	9	1.5%
McDuffie	18	0.9%	Total	620	100.0%
Laurens	18	0.9%	EGSC Swainsboro		
Appling	15	0.7%	Emanuel	163	16.4%
Houston	13	0.6%	Richmond	63	6.3%
Liberty	12	0.6%	Jefferson	52	5.2%
Hall	11	0.5%	Toombs	51	5.1%
Montgomery	10	0.5%	Chatham	43	4.3%
Treutlen	10	0.5%	Bulloch	40	4.0%
Lincoln	10	0.5%	Johnson	35	3.5%
Rockdale	9	0.4%	Washington	33	3.3%
Jeff Davis	8	0.4%	Candler	32	3.2%
Wayne	8	0.4%	Columbia	32	3.2%
Douglas	7	0.3%	Tattnall	29	2.9%
Baldwin	7	0.3%	Effingham	20	2.0%
76 Other GA Counties	178	9.2%	92 Other GA Counties	395	39.7%
Total from Georgia	1,959	96.8%	Total from Georgia	956	96.0%
Total Out of State	64	3.2%	Total Out of State	40	4.0%
Total	2,023	100.0%	Total	996	100.0%

Source: EGSC Office of Strategic Planning and Institutional Research

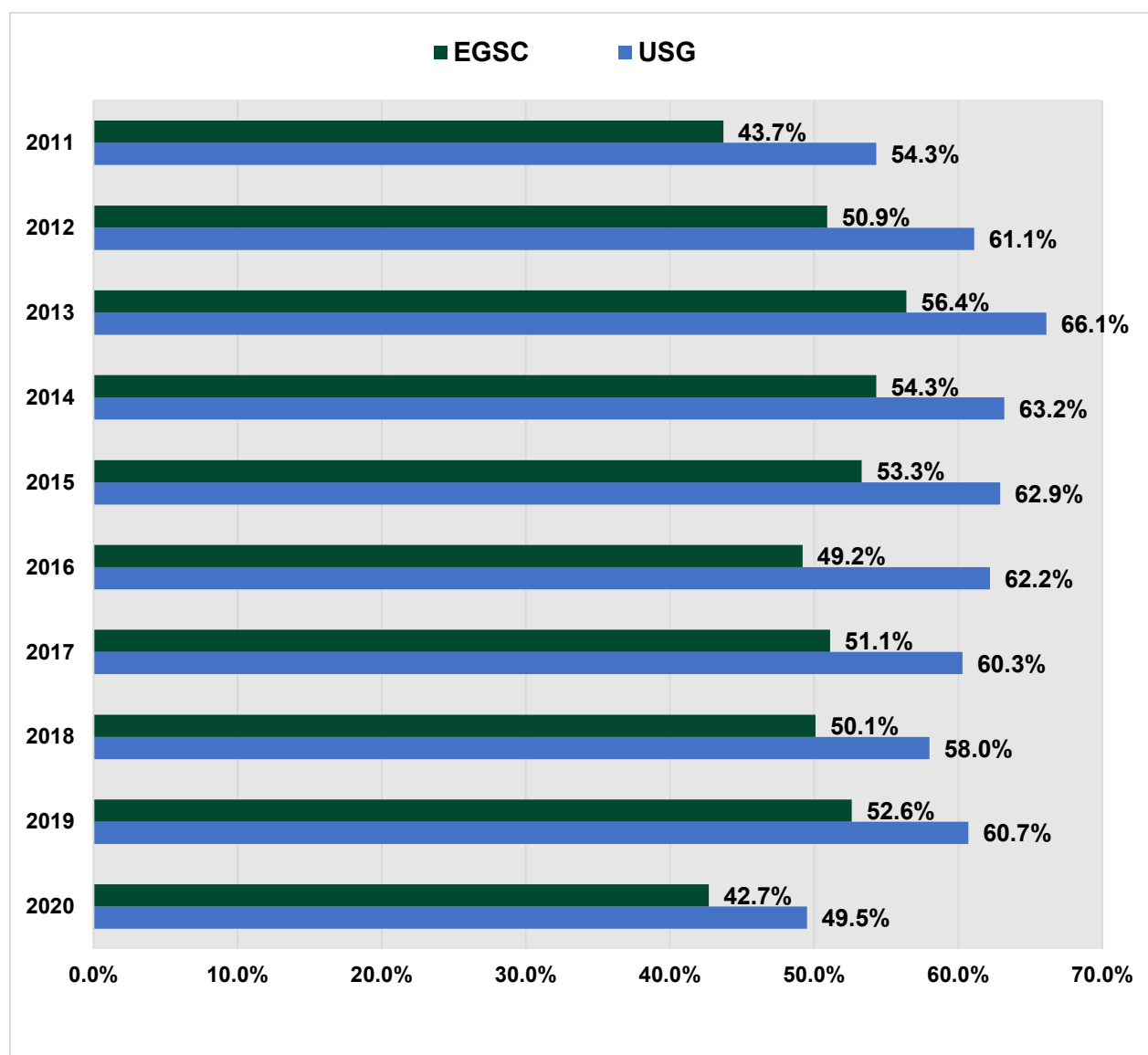
Fall Semester 2021 Percentages of Student Load by Class Level

Student Load	Freshman	Sophomore	Junior	Senior	Overall
Full-time	77.0%	66.7%	45.7%	26.2%	71.2%
Part-time	23.0%	33.3%	54.3%	73.8%	28.8%

Fall Semester 2021 Number of Veteran/Military Students

Military Students	No.
MG - Military National Guard	16
MR - Military Reservist	4
Veteran Duty/Military Active Army	9
Total	29

Retention Rates for First-Time Full-Time Undergraduates: Entering Fall 2011 – 2020 Cohorts



Source: University System of Georgia Office of Research and Policy Analysis

STUDENT RELATED INFORMATOIN

Crime Statistics

EGSC Augusta – Summerville Campus, Augusta University for the 2020, 2019 and 2018 Calendar Years

Reportable Offenses	Locations	2020	2019	2018
Rape	On-Campus Property	0	1	2
	On- Campus Residential Facilities	0	1	2
	Non-Campus Property	0	0	0
	Public Property	0	0	0
Fondling	On-Campus Property	0	1	1
	On- Campus Residential Facilities	0	1	1
	Non-Campus Property	0	0	0
	Public Property	0	0	0
Robbery	On-Campus Property	0	2	0
	On- Campus Residential Facilities	0	1	0
	Non-Campus Property	0	0	0
	Public Property	0	0	0
Burglary	On-Campus Property	0	1	1
	On- Campus Residential Facilities	0	0	1
	Non-Campus Property	0	0	0
	Public Property	0	0	0
Drug Law Violations >Arrests	On-Campus Property	0	2	3
	On- Campus Residential Facilities	0	2	3
	Non-Campus Property	0	0	0
	Public Property	0	0	0
Drug Law Violations >Disciplinary Referrals	On-Campus Property	0	2	0
	On- Campus Residential Facilities	0	2	0
	Non-Campus Property	0	0	0
	Public Property	0	0	0

EGSC Augusta – Summerville Campus, Augusta University for the 2020, 2019 and 2018 Calendar Years

Reportable Offenses	Locations	2020	2019	2018
Liquor Law Violations > Disciplinary Referrals	On-Campus Property	0	4	0
	On- Campus Residential Facilities	0	4	0
	Non-Campus Property	0	0	0
	Public Property	0	0	0
Dating Violence	On-Campus Property	0	0	1
	On- Campus Residential Facilities	0	0	0
	Non-Campus Property	0	0	1
	Public Property	0	0	0
Stalking	On-Campus Property	0	8	1
	On- Campus Residential Facilities	0	2	0
	Non-Campus Property	0	0	0
	Public Property	0	0	0

EGSC Statesboro for the 2020, 2019 and 2018 Calendar Years

Reportable Offenses	Locations	2020	2019	2018
Drug Law Violations >Arrests	On-Campus Property	0	0	0
	On- Campus Residential Facilities	0	0	0
	Non-Campus Property	0	0	0
	Public Property	0	2	0
Drug Law Violations >Disciplinary Referrals	On-Campus Property	0	0	0
	On- Campus Residential Facilities	0	0	0
	Non-Campus Property	0	0	0
	Public Property	0	2	0

EGSC Statesboro for the 2020, 2019 and 2018 Calendar Years (concluded)

Reportable VAWA Offenses	Locations	2020	2019	2018
Dating Violence	On-Campus Property	0	1	0
	On- Campus Residential Facilities	0	0	0
	Non-Campus Property	0	0	0
	Public Property	0	0	0
Domestic Violence	On-Campus Property	0	0	0
	On- Campus Residential Facilities	0	0	0
	Non-Campus Property	0	2	0
	Public Property	0	0	0

EGSC Swainsboro for the 2020, 2019 and 2018 Calendar Years

Reportable Offenses	Locations	2020	2019	2018
Rape Sex Offense	On-Campus Property	2	0	0
	On-Campus Residential	2	0	0
	Non-Campus Property	0	0	0
	Public Property	0	0	0
Fondling Sex Offense	On-Campus Property	0	0	0
	On-Campus Residential	1	0	0
	Non-Campus Property	1	0	0
	Public Property	0	0	0
Burglary	On-Campus Property	0	0	1
	On-Campus Residential	0	0	1
	Non-Campus Property	0	0	0
	Public Property	0	0	0
Drug Law Violations >Arrests:	On-Campus Property	0	5	5
	On-Campus Residential Facilities	0	0	5
	Non-Campus Property	3	0	0
	Public Property	0	0	0
Drug Law Violations > Disciplinary Referrals	On-Campus Property	2	12	1
	On-Campus Residential	3	0	1
	Non-Campus Property	0	0	0
	Public Property	0	0	0

EGSC Swainsboro for the 2020, 2019 and 2018 Calendar Years (concluded)

Reportable Offenses	Locations	2020	2019	2018
Liquor Law Violations >Arrests:	On-Campus Property	0	1	0
	On-Campus Residential Facilities	0	0	0
	Non-Campus Property	1	0	0
	Public Property	0	0	0
Liquor Law Violations > Disciplinary Referrals				
	On-Campus Property	0	7	2
	On-Campus Residential	3	0	2
	Non-Campus Property	0	0	0
	Public Property	0	0	0
Dating Violence				
	On-Campus Property	0	0	0
	On-Campus Residential	2	0	0
	Non-Campus Property	0	0	0
	Public Property	0	0	0

Source: EGSC Office of Public Safety Clery Reports

East Georgia State College Graduate Alumni by State of Residence through Fall 2021

State	Alumni	State	Alumni	State/Other	Alumni
Alabama	1	Massachusetts	1	Rhode Island	1
Alaska	2	Michigan	1	South Carolina	17
California	4	Minnesota	1	Tennessee	3
Connecticut	1	Missouri	3	Texas	2
Florida	11	Nevada	1	Virginia	3
Georgia	5,581	New Jersey	1	West Virginia	1
Illinois	2	New York	2	Army Post Office	1
Kansas	1	North Carolina	4		
Louisiana	1	Oregon	1	Canada	1
Maryland	3	Pennsylvania	2		
		Total	5,653		

Source: EGSC Office of Institutional Advancement

East Georgia State College Georgia Graduate Alumni by County of Residence through Fall 2021

GA County	Alumni	GA County	Alumni	GA County	Alumni	GA County	Alumni
Appling	29	Decatur	4	Jasper	3	Putnam	2
Bacon	1	Dekalb	41	Jeff Davis	9	Richmond	99
Baldwin	10	Dodge	5	Jefferson	273	Rockdale	9
Barrow	3	Dooly	1	Jenkins	224	Screven	109
Ben Hill	2	Dougherty	7	Johnson	299	Stephens	4
Bibb	21	Douglas	6	Laurens	140	Sumter	1
Bleckley	3	Early	1	Liberty	49	Tattnall	197
Bryan	38	Effingham	85	Lincoln	3	Telfair	2
Bulloch	481	Elbert	4	Lowndes	4	Thomas	2
Burke	171	Emanuel	1,655	Long	4	Tift	3
Butts	3	Evans	102	Macon	1	Toombs	513
Camden	13	Fayette	9	Madison	18	Treutlen	115
Candler	285	Forsyth	5	McDuffie	2	Troup	2
Carroll	5	Franklin	1	McIntosh	1	Upton	3
Chatham	80	Fulton	42	Mitchell	1	Walton	8
Cherokee	7	Glascocock	5	Montgomery	2	Ware	1
Clarke	14	Glynn	11	Morgan	4	Warren	2
Clayton	9	Greene	1	Muscogee	10	Washington	38
Cobb	28	Gwinnett	40	Newton	3	Wayne	15
Coffee	7	Habersham	2	Oconee	3	Wheeler	9
Colquitt	7	Hall	4	Paulding	2	Whitfield	1
Columbia	46	Harrelson	4	Peach	2	Wilcox	1
Cook	1	Hart	1	Pickens	1	Wilkes	10
Coweta	4	Henry	32	Pierce	2	Wilkinson	3
Crisp	2	Houston	25	Polk	2	Total	5,581
Dawson	1	Jackson	3	Pulaski	3		

Source: EGSC Office of Institutional Advancement

FACULTY AND STAFF

Full-Time Faculty Spring Semester 2022

Augusta Faculty	Discipline	Swainsboro Faculty	Discipline
Sega, Martiana F.	Biology	Goss, Natasha W.	Accounting/Business
Nordan, Robert G.*	CATS/Music	Purcell, Desmal	Art
Brady, James*	Communications	Cadle, John E.	Biology
Walter, Jason A.	English	Dickens, Darlene C.*	Biology
Waalkes, Mary	History	Simmons, Breana†	Biology
Yocco, Lisa	Mathematics	Smoyer, John H.	Biology
Mullins, Robert A. †	Political Science	Nordan, Robert G.*	CATS/Music
Wruck, Eric*	Psychology	Cerpovicz, Paul	Chemistry
Dart, Jeniba J.*	Spanish	Davis, Theresa R.	CHOICE
Statesboro Faculty	Discipline	Lee, Jaehyuk*†	Economics
Dickens, Darlene C.*	Biology	Boudreaux, Armond	English
Brady, James*	Communications	Brasher, Alan	English
Lee, Jaehyuk*	Economics	Jordan, Annliss	English
Chambers, Laura M. †	English	Kraus, Christian N.	English
Czerny, Valerie	English	Palumbo, Carmine D.	English
Denton, Gina R.	English	Simmons, Amelia J.*	English
Simmons, Amelia J.*	English	Strickland, Julie M.†	English
Howell, Jeffery B.	History	Todd, Jessica A.	English/Spanish
Vess, Deborah L.	History	Upchurch, Thomas	History
Lee, Jason C.	Integrated Science	Drummer, Antre' M.	Mathematics
Barrs, Keith	Mathematics	Gleissner, John	Mathematics
Vora, Minal A.	Mathematics	Lynn, Candace M.	Mathematics
Xie, Fang	Mathematics	Eaton, Johnna W.*	Physical Education
Eaton, Johnna W.*	Physical Education	Mason, Walter C.	Physical Education
Caiazzo, Thomas A.	Political Science	White, Yelena V.	Physics/ Integrated Science
Mancill, Daniel K.	Political Science	Cheek, Howard L.	Political Science
Kearns, Tori	Psychology	Cunha, Carlos A.	Political Science
Lee, Deborah†	Psychology	Braddy, Larry	Psychology
Altamirano, David	Sociology	Wruck, Eric*	Psychology
Bragg, Susan E.	Sociology	Bragg, Susan E.	Sociology
Dart, Jeniba J.*	Spanish	Vogel, Harry L.	Sociology
		Williams, Shawna	Spanish

*Faculty teaching at more than one EGSC location

†Faculty teaching dual enrollment courses at a high school

David Chevalier, Associate Vice President for Academic Affairs

John E. Cadle, Swainsboro Academic Coordinator

Courtney Joiner, Augusta/Statesboro Academic Coordinator

Da'Mon Andrews, Associate Vice President for Data Analytics and Student Attainment

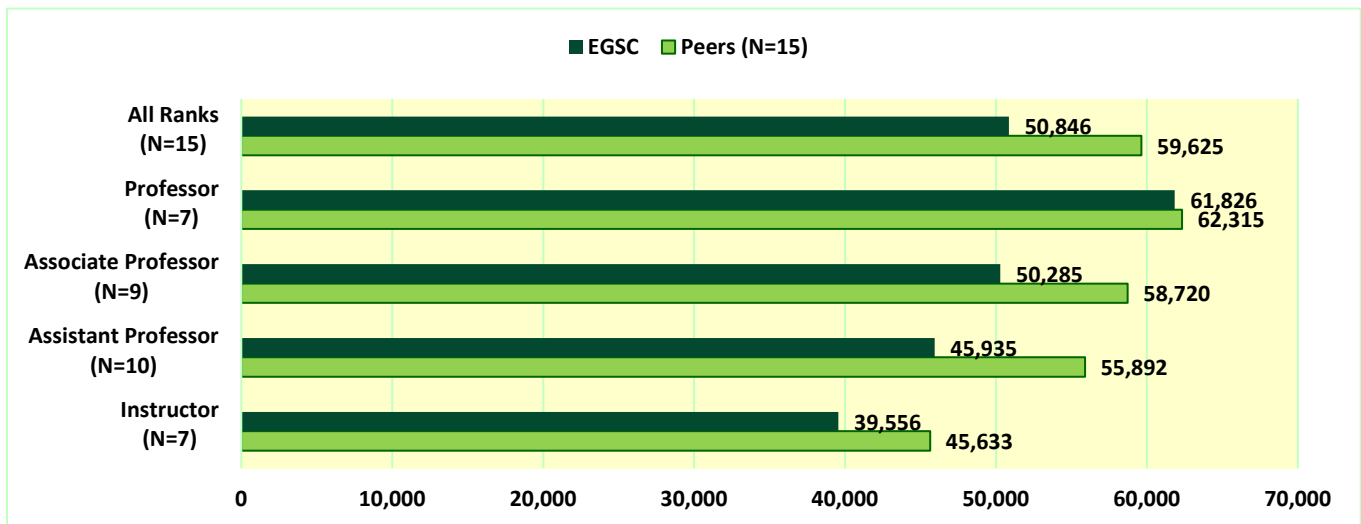
Source: EGSC Office of Strategic Planning and Institutional Research

Faculty Rank by Ethnicity and Gender Fall 2021

Full-Time Faculty Fall Semester 2021		Professor		Associate Professor		Assistant Professor		Instructors		Total	
		No.	%	No.	%	No.	%	No.	%	No.	%
Nonresident Alien	Men			1	1.6%					1	1.6%
	Women									0	0.0%
Asian	Men									0	0.0%
	Women	1	1.6%	2	3.2%					3	4.8%
Black	Men			2	3.2%	1	1.6%			3	4.8%
	Women	1	1.6%	0	0.0%	1	1.6%			2	3.2%
Hispanic	Men			1	1.6%					1	1.6%
	Women	1	1.6%					1	1.6%	2	3.2%
White	Men	11	17.5%	9	14.3%	4	6.3%	3	4.8%	27	42.9%
	Women	7	11.1%	11	17.5%	2	3.2%	4	6.3%	24	38.1%
Multiracial	Men									0	0.0%
	Women									0	0.0%
Total	Men	11	17.5%	13	20.6%	5	7.9%	3	4.8%	32	50.8%
	Women	10	15.9%	13	20.6%	3	4.8%	5	7.9%	31	49.2%
	Total	21	33.3%	26	41.3%	8	12.7%	8	12.7%	63	100.0%

EGSC Full-Time Faculty Salaries Compared to IPED Peers AY 2019-20

Faculty Salaries	EGSC	Peers	% of Peers
All Ranks	50,846	59,625	85.3%
Professor	61,826	62,315	99.2%
Associate Professor	50,285	58,720	85.6%
Assistant Professor	45,935	55,892	82.2%
Instructor	39,556	45,633	86.7%



Source: IPEDS (Integrated Postsecondary Education Data System)

College Full-Time Employees by Occupational Classification, Gender and Ethnicity: Fall Semester 2021

Employees by Occupational Category	White	Black	Hispanic	Asian	Multiracial	Nonresident Alien	Total
Men	54	6	3	0	1	1	65
Instructional Staff	27	3	1		0	1	32
Student and Academic Affairs and Other Education Services Occupations	1						1
Management	11	1			1		13
Business and Financial Operations	1						1
Computer, Engineering, and Science	2						2
Community, Social Service, Legal, Arts, Design, Entertainment, Sports and Media	2	2					4
Service Occupations	4						4
Office and Administrative Support	2		1				3
Natural Resources, Construction, and Maintenance	4		1				5
Women	66	25	2	3	0	0	96
Instructional Staff	24	2	2	3			31
Librarians and Media Collection Specialists	2						2
Student and Academic Affairs and Other Education Services Occupations	3	5					8
Management	17	8					25
Business and Financial Operations	2						2
Computer, Engineering, and Science							0
Community, Social Service, Legal, Arts, Design, Entertainment, Sports and Media		1					1
Service Occupations	4	5					9
Office and Administrative Support	14	4					18
Total	120	31	5	3	1	1	161

Source: IPEDS (Integrated Postsecondary Education Data System)

FINANCIAL INFORMATION

Revenue by Source: Fiscal Years 2015-16 through 2019-20

EGSC Revenue Category	FY 2015-16	FY 2016-17	FY 2017-18	FY 2018-19	FY 2019-20
Tuition and fees after deducting discounts and allowances	4,439,163	4,364,180	4,096,626	3,981,928	3,325,502
Federal operating grants and contracts	50,547	89,177	90,755	56,238	72,374
State operating grants and contracts	44,765	138,270	221,735	199,676	119,206
Local/private operating grants and contracts	12,723	18,426	5,250	19,337	3,000
Sales and services of auxiliary enterprises	2,092,577	2,762,654	2,714,785	2,807,410	2,411,730
Other sources - operating	108,873	88,873	97,091	203,118	333,762
Total operating revenues	6,748,648	7,461,580	7,226,242	7,267,707	6,265,574
State appropriations	6,923,831	8,442,439	9,237,733	9,984,666	10,123,680
Federal nonoperating grants	8,827,698	8,435,237	8,323,618	8,515,520	10,295,620
State nonoperating grants	48,469	51,585	53,017	76,518	95,651
Gifts including contributions from affiliated organizations	343,450	365,326	872,343	741,321	945,909
Investment income	3,690	6,919	11,972	31,014	26,502
Total nonoperating revenues	16,147,138	17,301,506	18,498,683	19,349,039	21,487,362
Total operating and nonoperating revenues	22,895,786	24,763,086	25,724,925	26,616,746	27,752,936
Capital grants and gifts	229,943	3,282,623	808,696	1,115,265	3,352,982
Total revenues and other additions	23,125,729	28,045,709	26,533,621	27,732,011	31,105,918
Percent by Line Item of Total Revenues and Other Additions:					
Tuition and fees after deducting discounts and allowances	19.2%	15.6%	15.4%	14.4%	10.7%
Federal operating grants and contracts	0.2%	0.3%	0.3%	0.2%	0.2%
State operating grants and contracts	0.2%	0.5%	0.8%	0.7%	0.4%
Local/private operating grants and contracts	0.1%	0.1%	0.0%	0.1%	0.0%
Sales and services of auxiliary enterprises	9.0%	9.9%	10.2%	10.1%	7.8%
Other sources - operating	0.5%	0.3%	0.4%	0.7%	1.1%
Total operating revenues	29.2%	26.6%	27.2%	26.2%	20.1%
State appropriations	29.9%	30.1%	34.8%	36.0%	32.5%
Federal nonoperating grants	38.2%	30.1%	31.4%	30.7%	33.1%
State nonoperating grants	0.2%	0.2%	0.2%	0.3%	0.3%
Gifts including contributions from affiliated organizations	1.5%	1.3%	3.3%	2.7%	3.0%
Investment income	0.0%	0.0%	0.0%	0.1%	0.1%
Total nonoperating revenues	69.8%	61.7%	69.7%	69.8%	69.1%
Total operating and nonoperating revenues	99.0%	88.3%	97.0%	96.0%	89.2%
Capital grants and gifts	1.0%	11.7%	3.0%	4.0%	10.8%
Total revenues and other additions	100.0%	100.0%	100.0%	100.0%	100.0%

Source: IPEDS (Integrated Postsecondary Education Data System)

Expenditures by Function: Fiscal Years 2015-16 through 2019-20

EGSC Expense Category	FY 2015-16	FY 2016-17	FY 2017-18	FY 2018-19	FY 2019-20
Instruction	8,636,134	9,602,982	10,395,773	10,033,552	10,333,306
Public Service	-	-	-	-	9,959
Academic support	2,476,364	2,553,984	2,927,461	2,674,731	3,233,104
Student services	2,424,760	2,265,463	2,372,957	2,200,818	2,200,481
Institutional support	3,311,666	3,472,560	3,774,566	3,835,436	5,012,482
Scholarships and fellowships expenses	4,918,265	4,507,806	4,365,503	4,516,609	5,346,384
Auxiliary enterprises	2,362,906	2,266,486	2,293,682	2,413,267	2,068,558
Other Functional Expenses and deductions	-	-	-	1,012,077	1,489,057
Total expenses and deductions	24,130,095	24,669,281	26,129,942	26,686,490	29,693,331
Percent by Line Item of Total Expenses and Deductions	FY 2015-16	FY 2016-17	FY 2017-18	FY 2018-19	FY 2019-20
Instruction	35.8%	38.9%	39.8%	37.6%	34.8%
Academic support	10.3%	10.4%	11.2%	10.0%	10.9%
Student services	10.0%	9.2%	9.1%	8.2%	7.4%
Institutional support	13.7%	14.1%	14.4%	14.4%	16.9%
Scholarships and fellowships expenses	20.4%	18.3%	16.7%	16.9%	18.0%
Auxiliary enterprises	9.8%	9.2%	8.8%	9.0%	7.0%
Other Functional Expenses and deductions	-	-	-	3.8%	5.0%
Total expenses and deductions	100.0%	100.0%	100.0%	100.0%	100.0%

Source: IPEDS (Integrated Postsecondary Education Data System)

East Georgia State College Foundation Fundraising 1999 - 2021

YEAR	TOTAL CONTRIBUTIONS	TOTAL SUPPORT AND REVENUE
1999	54,996	55,996
2000	78,784	83,109
2001	95,270	128,007
2002	93,775	81,647
2003	186,057	211,939
2004	216,682	248,861
2005	300,648	268,550
2006	178,285	221,509
2007	240,945	361,744
2008	252,896	192,454
2009	127,077	178,484
2010	234,782	270,205
2011	152,147	174,646
2012	233,908	272,130
2013	245,723	317,148
2014	247,087	363,075
2015	1,255,543	1,292,216
2016	210,392	234,614
2017	766,721	879,720
2018	789,116	880,994
2019	298,465	356,398
2020	283,319	311,582
2021	335,709	387,556

Source: Annual audited financial statements, East Georgia State College Foundation

PHYSICAL FACILITIES

College Buildings by Major Use, Swainsboro Campus: SPRING 2022

Major Use	No.	Description
Administration	5	GL Smith, LFG, Student Services, Police Department, Plant Operations
Academic	1	Academic Building
Physical Education/Athletics	1	GYM/PE Building
Public Service	1	Fulford Center
Residential	3	Bobcat Villas South, West; Strange Clubhouse

Number of Rooms by Basic Room Type, Swainsboro Campus: Spring 2022

Basic Room Type	No.
Classrooms	20
Discipline Teaching Laboratories	9
Computer Classroom	4
Offices	158

Space Assignment by Room Use and Building Location: Spring 2022

Space Assignment by Room Use	Sq. Feet
Classroom	14,429
Discipline Teaching Laboratories	8,712
Computer Classrooms	3,421
Offices	27,052
Library	10,615
Study	8,168
General Use	29,815
Support Services	11,954
Support Facilities	7,318
Residential	90,557
Non-assignable	114,920
Healthcare	698
Special Use Facilities	21,444
Total Square Feet	349,103

East Georgia State College Land Holdings*: As of December 2021

Swainsboro - 249.62 Acres

*Does not include EGSC Foundation Property

Source: EGSC Office of the Director of Operations